

CUSTOM CURVED



A CUSTOM PROFILE FOR YOUR BUILDING

Extruded canopies are available in a wide variety of custom profiles and styles. Curved fascia in a horizontal or vertical plane can be designed to accent many different architectural aesthetics. Converging and multiple hanger rod designs can be used under conditions where limited wall support is available or to create visual interest.

For more details, please visit mapes.com

CUSTOM CURVED

TECHNICAL DATA

All-extruded Aluminum (T6 – 6063)

Fascia .125"

Decking .078"

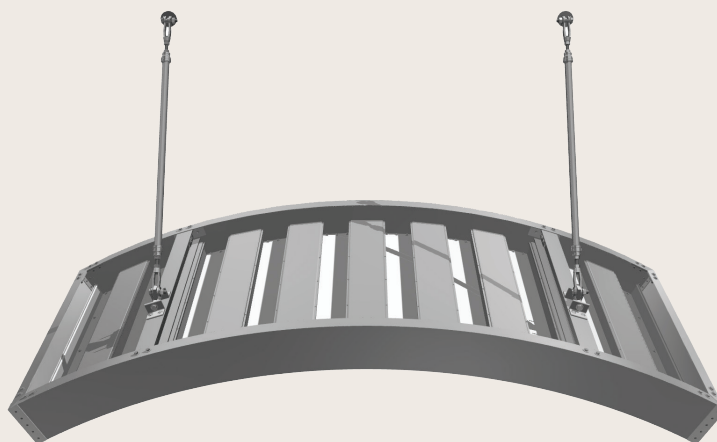
Deflection rating L/180

Maximum Projection

10' w/ hanger rod supports

5' w/ cantilever supports

Note: Engineered stamped calcs available in all 50 states



CANOPY DETAILS

Finishes		Warranty		Application
Mapes Standard Finishes	Clear Anodized, White Baked Enamel, & Bronze Baked Enamel	1 year	Meets AAMA 2603 specifications	Factory applied
2-Coat Kynar*	25 stock colors w/ unlimited custom matching options	10 years	70% Fluoropolymer meets AAMA 2605 specifications	Professionally applied & cured by certified finisher

*Additional lead times and costs associated w/ premium paints & custom color matching

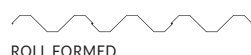
FEATURES

- Pre-engineered
- Curved Fascia
- High Load
- Curtain Wall Support
- Custom Colors

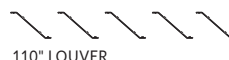
APPLICATIONS

- Retail Branding
- Storefronts
- Shopping Centers
- Office Buildings
- Parking Garages
- Historical Renovation
- Passive Solar

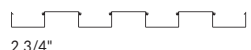
DECK OPTIONS



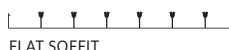
ROLL FORMED



.110" LOUVER

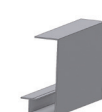


2 3/4"



FLAT SOFFIT

FASCIA OPTIONS



8" J



8" C-CHANNEL



10" C-CHANNEL



12" C-CHANNEL



8" J WITH 3" EXTENSION



8" J WITH 4" EXTENSION

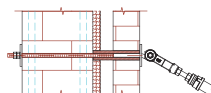


12" SMOOTH FACE

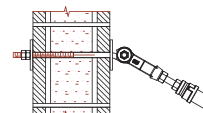


CUSTOM

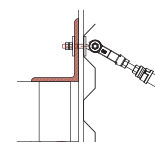
WALL MOUNT DETAILS



BRICK/BLOCK WITH THRU BOLT AND COMPRESSION SLEEVE



CMU WITH THRU BOLT



METAL BUILDING

MAPES ARCHITECTURAL CANOPIES

7748 North 56th Street, Lincoln, NE 68514 Phone: 888-273-1132 Fax: 877-455-6572 mapes.com