

SUPER LUMIDECK FLAT SOFFIT



ALL-WEATHER CANOPIES. AND WE MEAN ALL-WEATHER.

The Super Lumideck Flat Soffit canopy is an all-extruded, pre-engineered canopy designed for high-load architectural applications. The Flat Soffit deck style provides a ceiling aesthetic and achieves a clean, sleek design for any canopy application. The smooth deck can be combined with different fascia profiles to complement any design emphasis or building requirement. Compared to the alternatives, Mapes aluminum, non-rusting finish and high-quality extruded materials provide superior longevity, while meeting all local code requirements for snow and wind loads.

For more details, please visit mapes.com

SUPER LUMIDECK FLAT SOFFIT

TECHNICAL DATA

All-extruded Aluminum (T6 – 6063)

Fascia .125"

Decking .078"

Deflection rating L/180

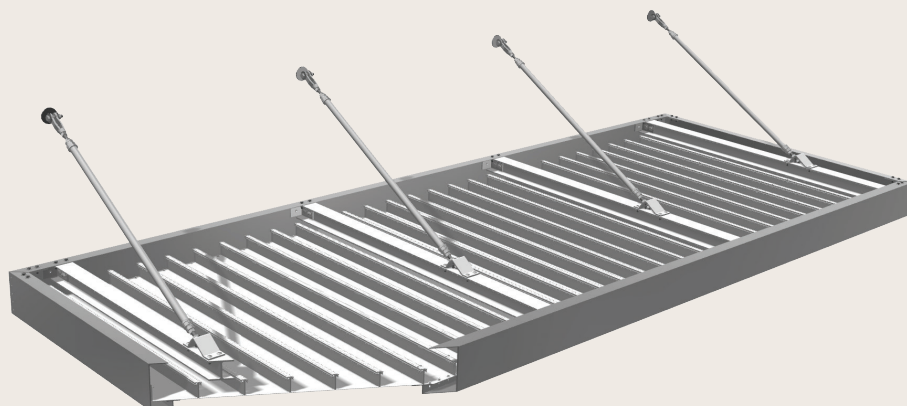
Maximum Projection*

8' w/ hanger rod supports

5' w/ cantilever supports

Note: Engineered stamped calcs available in all 50 states

*Maximum projection may vary based on load conditions



CANOPY DETAILS

Finishes		Warranty		Application
Mapes Standard Finishes	Clear Anodized, White Baked Enamel, & Bronze Baked Enamel	1 year	Meets AAMA 2603 specifications	Factory applied
2-Coat Kynar*	25 stock colors w/ unlimited custom matching options	10 years	70% Fluoropolymer meets AAMA 2605 specifications	Professionally applied & cured by certified finisher

*Additional lead times and costs associated w/ premium paints & custom color matching

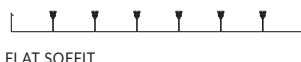
FEATURES

- Flat Soffit Decking
- High-load capacity
- Pre-engineered
- All-extruded Aluminum
- Rust & maintenance free
- Custom details & colors
- Pre-assembly options

APPLICATIONS

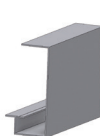
- Retail Branding
- Shopping Centers
- Storefronts
- Office Buildings

DECK OPTIONS



FLAT SOFFIT

FASCIA OPTIONS



8" J



8" C-CHANNEL



10" C-CHANNEL



12" C-CHANNEL



8" J WITH 3" EXTENSION



8" J WITH 4" EXTENSION

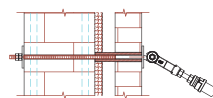


12" SMOOTH FACE

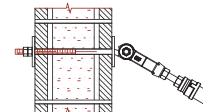


CUSTOM

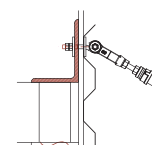
WALL MOUNT DETAILS



BRICK/BLOCK WITH THRU BOLT AND COMPRESSION SLEEVE



CMU WITH THRU BOLT



METAL BUILDING

MAPES ARCHITECTURAL CANOPIES

7748 North 56th Street, Lincoln, NE 68514 Phone: 888-273-1132 Fax: 877-455-6572 mapes.com