

# FIND YOUR INSPIRATION

Search our online project gallery at [mapescanopies.com/projects](http://mapescanopies.com/projects)

STOREFRONTS



RETAIL BRANDING



PASSIVE SOLAR



SUN CONTROL

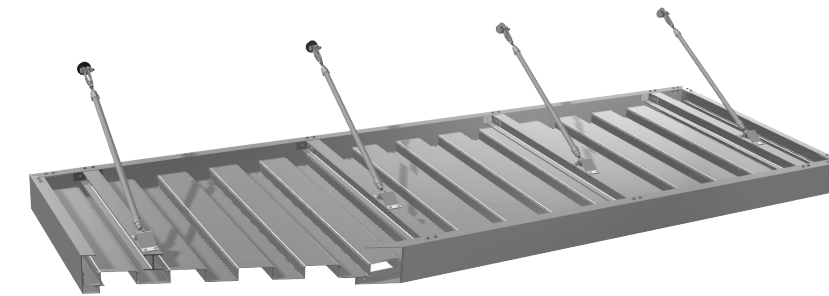


WAREHOUSES



## CANOPY SOLUTIONS

To build your own canopy, please visit [mapescanopies.com/spec\\_builder](http://mapescanopies.com/spec_builder)



### CANOPY COLOR CHART

[mapescanopies.com/color-charts](http://mapescanopies.com/color-charts)

#### Mapes Standard Stock Colors



#### Mapes Premium Colors – available in Kynar finishes

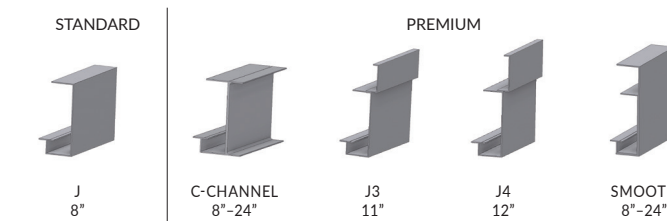


Due to printing process, colors are a general guide only. Consult factory for actual color samples.

One-year finish warranty for Mapes Standard Stock Colors. Ten-year finish warranty for Mapes Premium Kynar Colors.

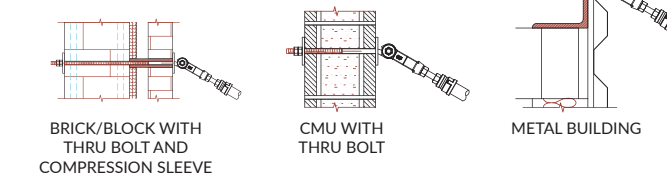
### FASCIA OPTIONS

[mapescanopies.com/design-options](http://mapescanopies.com/design-options)



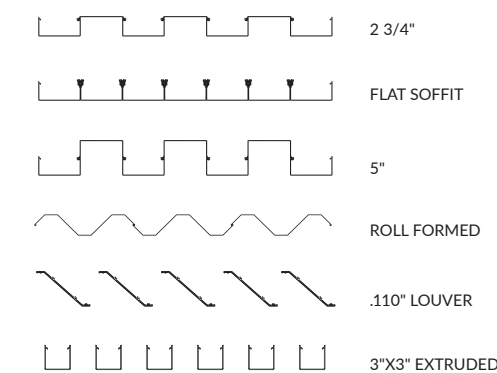
### WALL MOUNT DETAILS

[mapescanopies.com/design-options](http://mapescanopies.com/design-options)



### DECK OPTIONS

[mapescanopies.com/design-options](http://mapescanopies.com/design-options)



### MAPES ARCHITECTURAL CANOPIES

7748 North 56th Street, Lincoln, NE 68514 Phone: 888-273-1132 Fax: 877-455-6572 [mapes.com](http://mapes.com)



# HIGH LOAD & SUN CONTROL CANOPIES

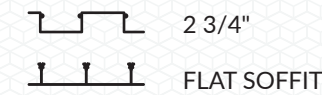


## SUPER LUMIDECK AND SUPER LUMIDECK FLAT SOFFIT

**All-weather canopies. And we mean all weather.**

- An all-extruded, aluminum canopy designed for high-load architectural applications
- All-extruded design provides a solution for both high snow loads and hurricane force winds

[mapescanopies.com/super-lumideck-flat-soffit](https://mapescanopies.com/super-lumideck-flat-soffit)

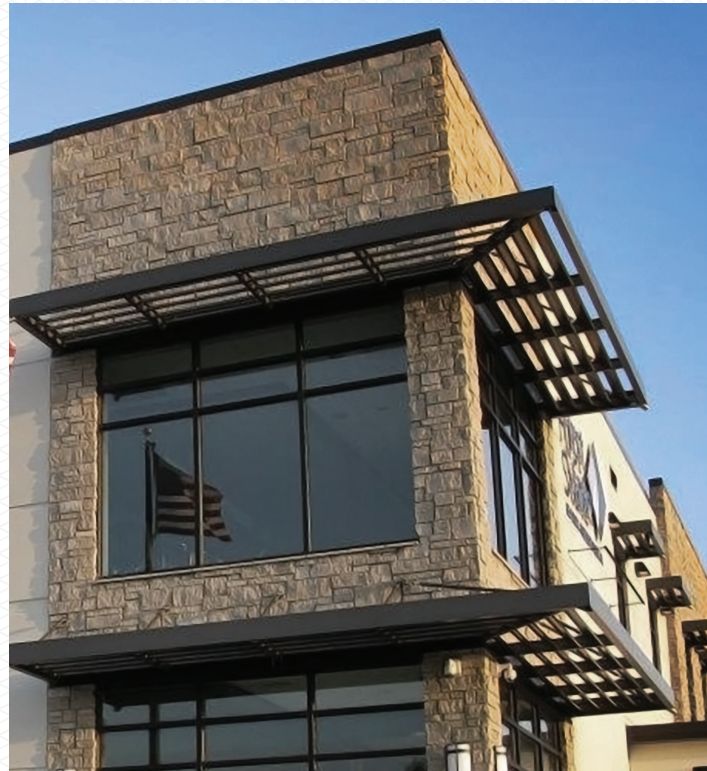


## LUMISHADE

**Versatile and adaptable to meet your needs.**

- Highly versatile, economical canopy for a wide variety of applications
- Optional fascias, hanger rods and escutcheon plates allow for design flexibility combined with low initial cost

[mapescanopies.com/lumishade](https://mapescanopies.com/lumishade)

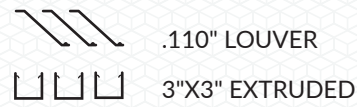


## SUPERSHADE

**Manage solar impact on any building.**

- Passive sun-control products that can be used to manage the impact of solar gain on any building
- Adaptive design allows SuperShade canopies to be integrated seamlessly with Lumishade solid deck styles (over doors)

[mapescanopies.com/supershade](https://mapescanopies.com/supershade)

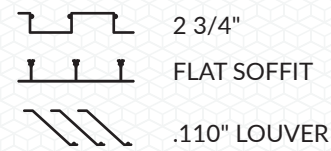


## CUSTOM CURVED

**A custom profile for your building.**

- Curved fascia in a horizontal or vertical plane can be designed to accent many different architectural aesthetics
- Converging and multiple hanger rod designs can be used under conditions where limited wall support is available

[mapescanopies.com/custom](https://mapescanopies.com/custom)



# POST SUPPORTED



## POST SUPPORTED

**All-extruded walkway canopy solution.**

- Prefabricated to ease installation
- Smoking shelters and break areas

[mapescanopies.com/post-supported](https://mapescanopies.com/post-supported)



## BUILD YOUR MAPES CANOPY ONLINE:

Visit our website to utilize our online tools. Build a custom spec or detail in just a few clicks. Imagine and create your unrivaled canopy.

[mapescanopies.com](https://mapescanopies.com)  
[mapescanopies.com/spec-builder](https://mapescanopies.com/spec-builder)  
[mapescanopies.com/contact-us](https://mapescanopies.com/contact-us)