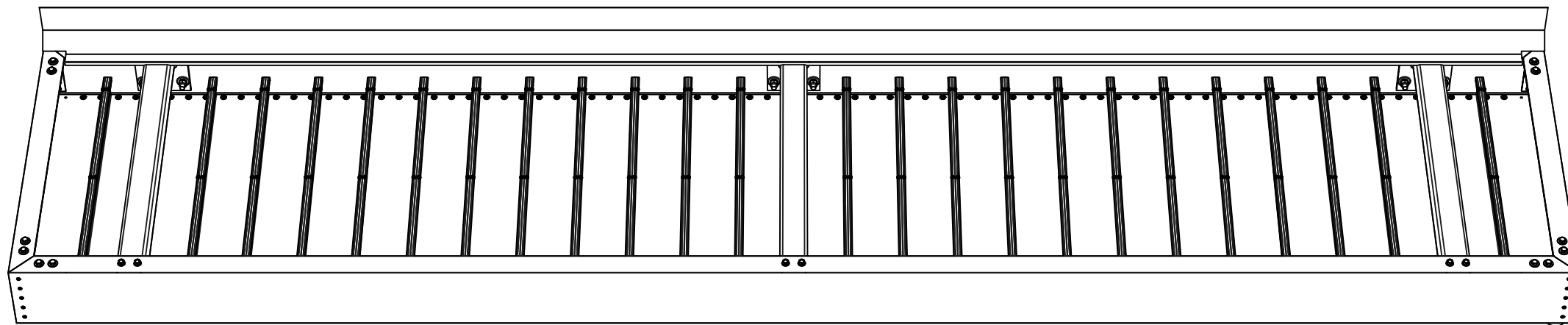
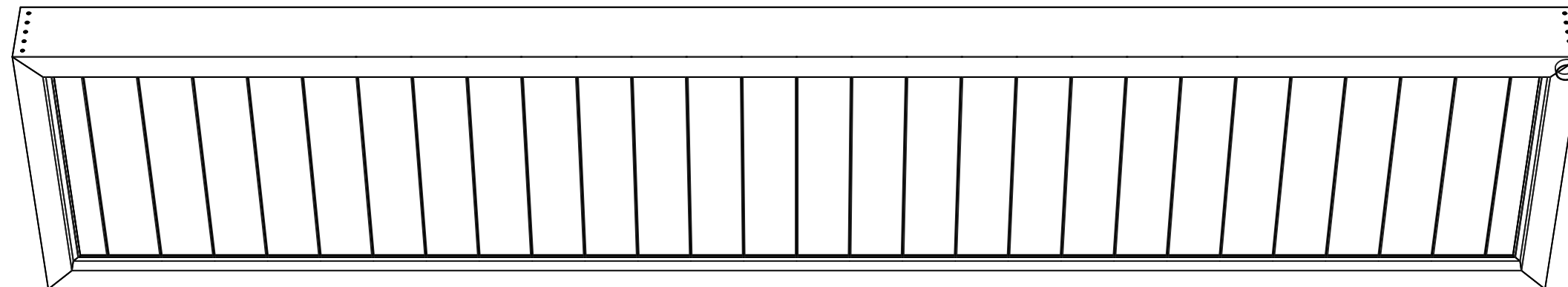


Canopy Assembly Instructions: Flat Soffit on Steel Tube Cantilever



COMPLETED FLAT SOFFIT CANOPY ON CANTILEVER SUPPORT



NOTE: USE THESE GENERAL INSTRUCTIONS IN CONJUNCTION WITH THE CANOPY SHOP DRAWINGS FOR YOUR SPECIFIC APPLICATION.

Canopy Assembly Instructions: Flat Soffit on Steel Tube Cantilever

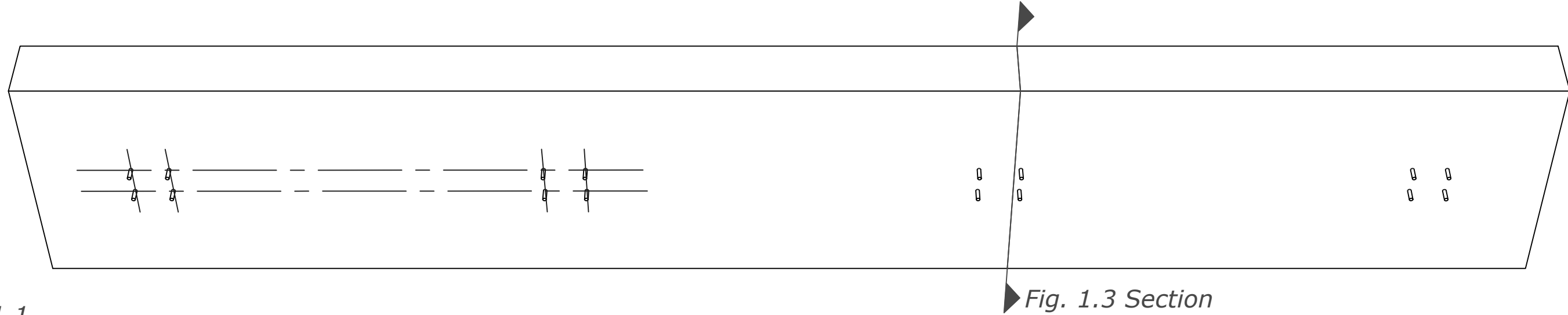


Fig. 1.1

Fig. 1.3 Section

1. Install Wall Bolts as dimensioned on canopy shop drawings. Seal all around wall penetrations.

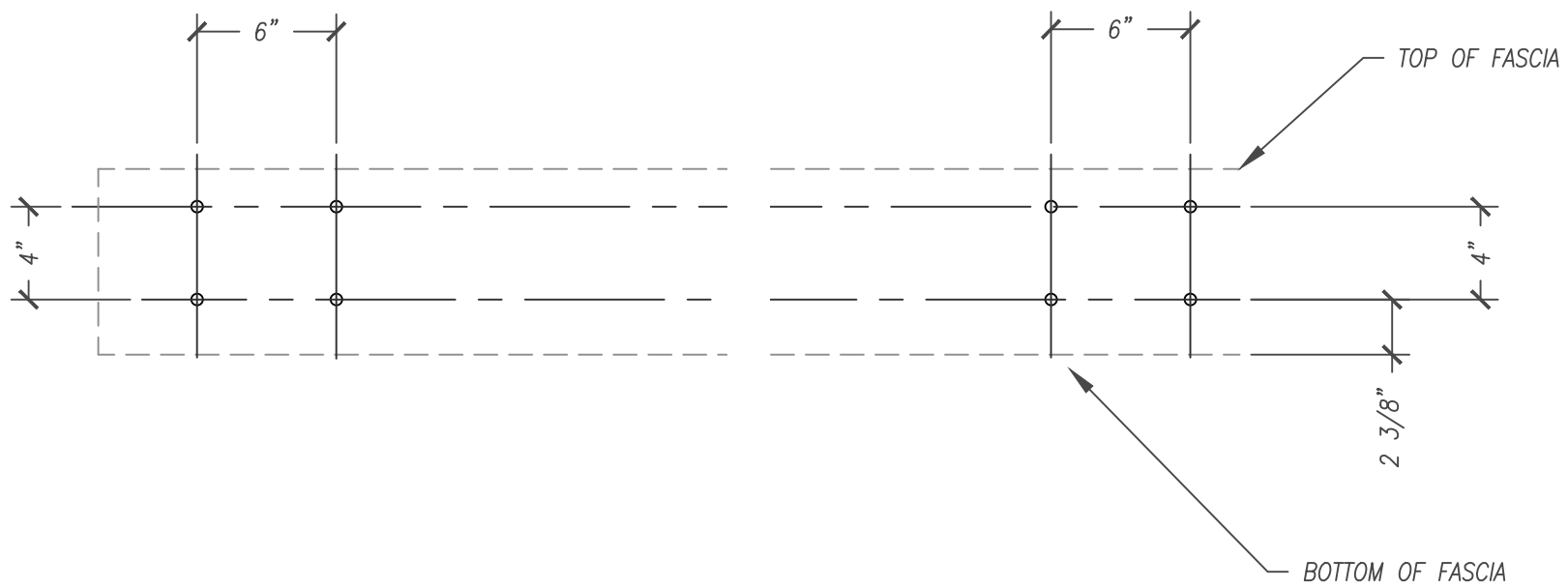


Fig. 1.2: Wall Bolts relative to fascia

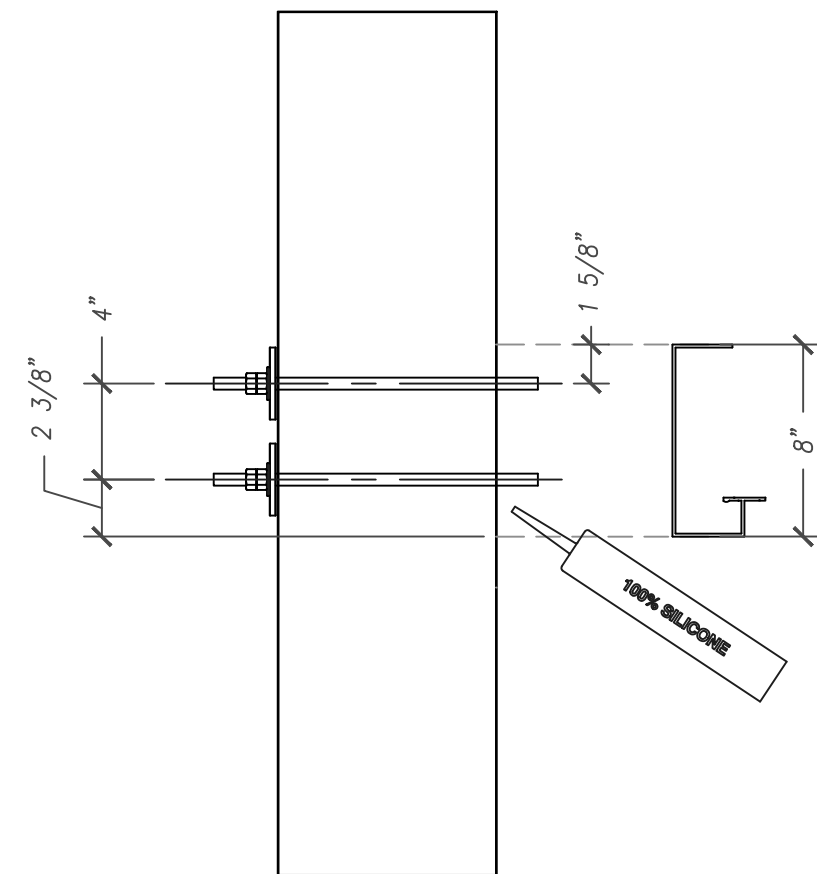
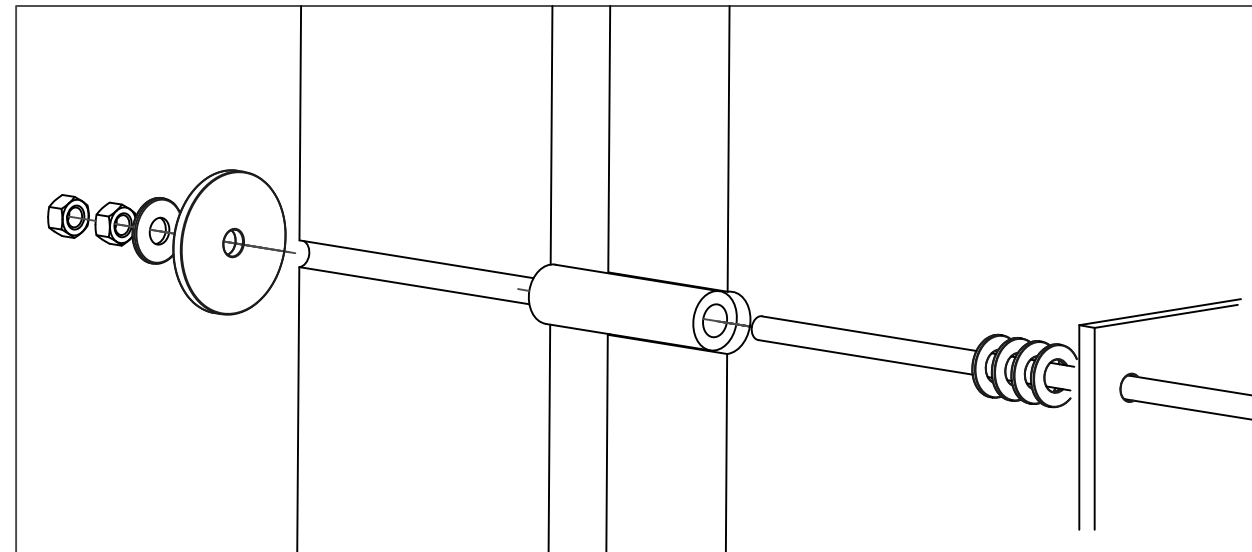


Fig. 1.3: Wall Bolts relative to fascia

NOTE: USE THESE GENERAL INSTRUCTIONS IN CONJUNCTION WITH THE CANOPY SHOP DRAWINGS FOR YOUR SPECIFIC APPLICATION.

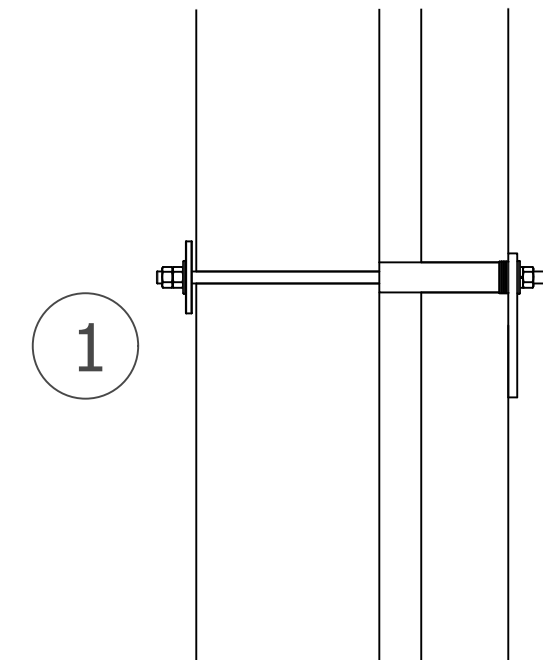
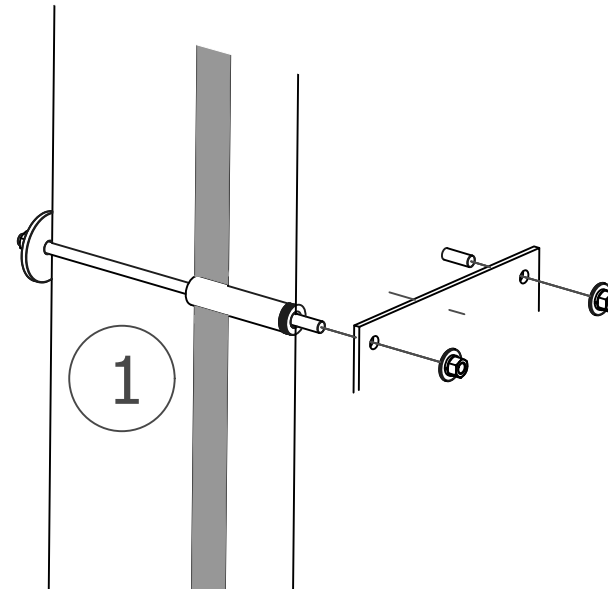
Canopy Assembly Instructions: Crush Sleeve Assembly



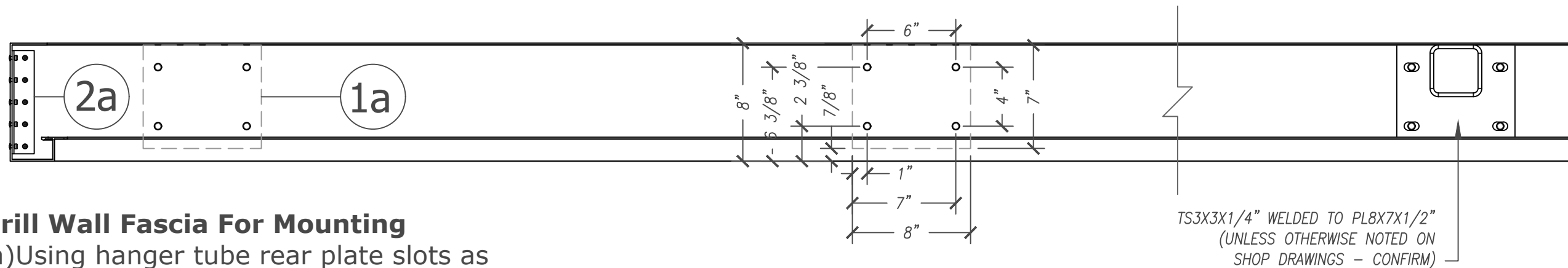
Crush Sleeve Application (if used):

On certain wall types, to prevent damage to the wall cladding or veneer, a "crush sleeve" assembly is added. Installed w/ the wall bolt, sleeve functions as a "ferrule" through wall cladding and transfers the canopy load to the building structure beyond.

1. 1/2"Ø Threaded rod w/ washers, nuts & 3"ØX.25 backing plate (w/ 1 1/4" OD x 11/16" ID tubing as crush sleeve (w/ 2 to 4 flat washers to bring assembly to wall face) through wall)



NOTE: USE THESE GENERAL INSTRUCTIONS IN CONJUNCTION WITH THE CANOPY SHOP DRAWINGS FOR YOUR SPECIFIC APPLICATION.

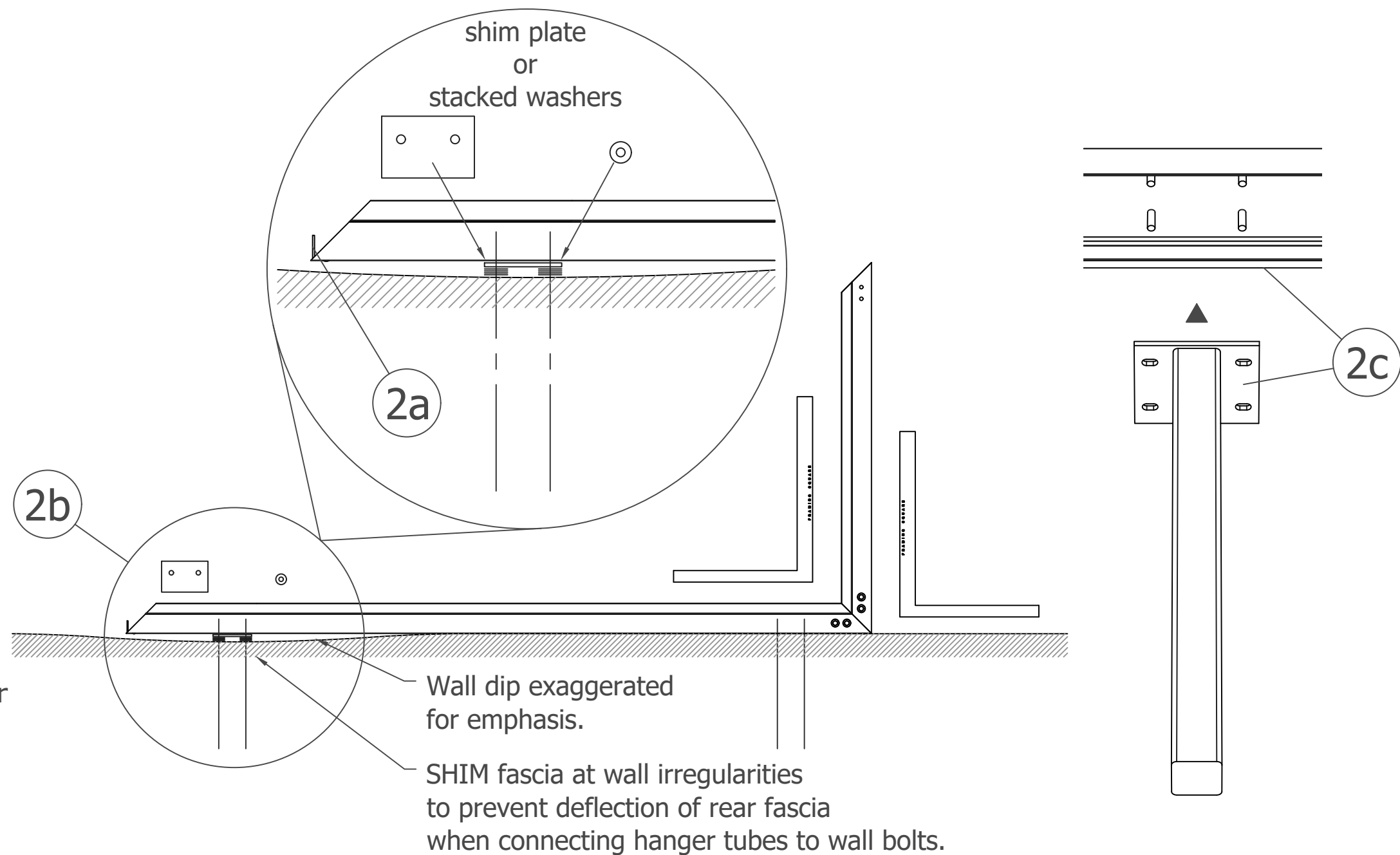


1. Drill Wall Fascia For Mounting

- a) Using hanger tube rear plate slots as guide, put directly on fascia to mark out holes. Use a center punch for accurate drilling. (NOTE: hanger tube and plate are factory-welded assemblies.)
- b) Using approved shop drawings as guide, measure and locate holes spacing in wall to correspond to rear fascia holes spacing. Drill 11/16" holes in fascia for easier fit.

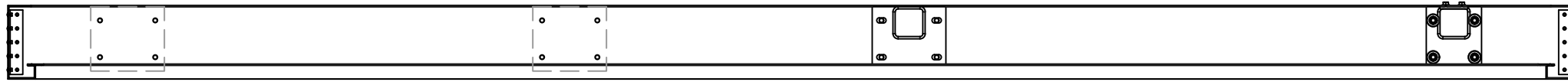
2. Install rear fascia and hanger tubes

- a) 1 1/2" x 1 1/2" inside corner angles are preassembled to fascia on 1 side.
- b) Before installing rear fascia assembly, check wall for uneven areas. Shim behind fascia at wall if required to prevent deflection when rear fascia is tightened to wall (shim material by installer).
- c) Fasten rear fascia to wall with hanger tube assembly over wall bolts.

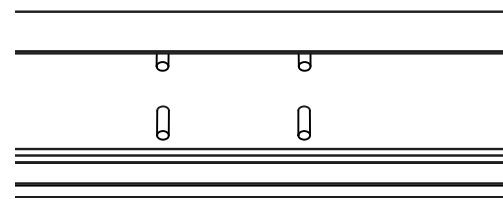
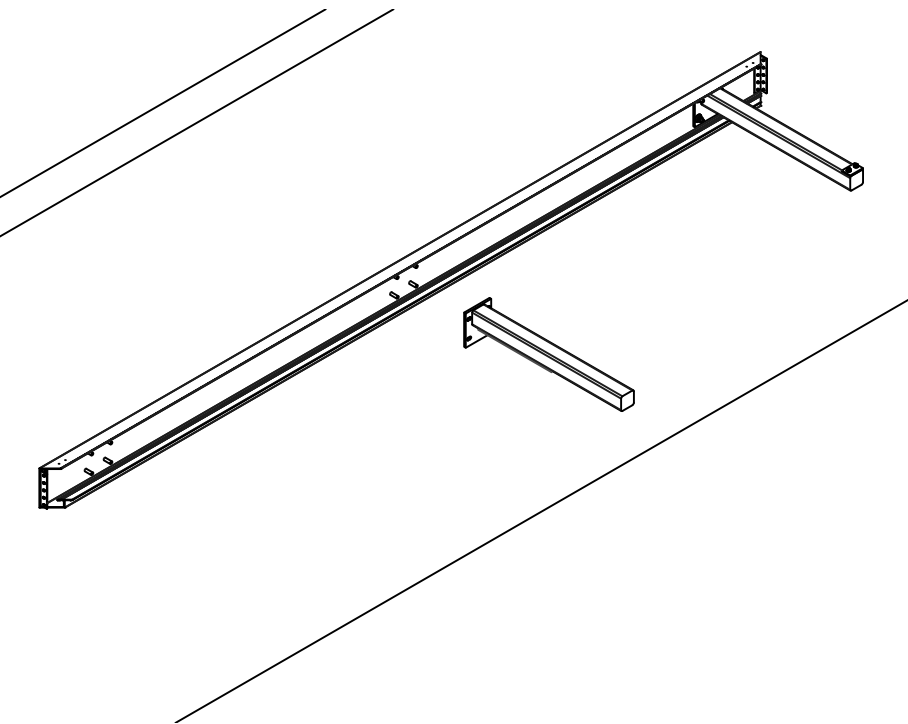


NOTE: USE THESE GENERAL INSTRUCTIONS IN CONJUNCTION WITH THE CANOPY SHOP DRAWINGS FOR YOUR SPECIFIC APPLICATION.

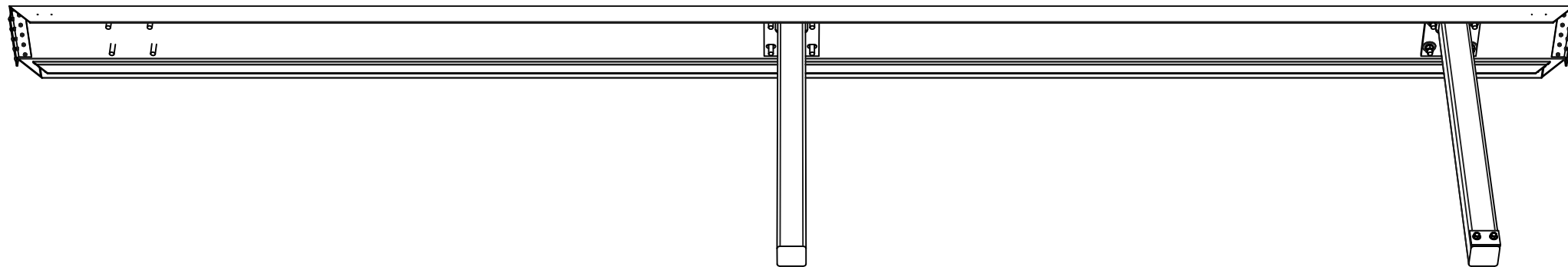
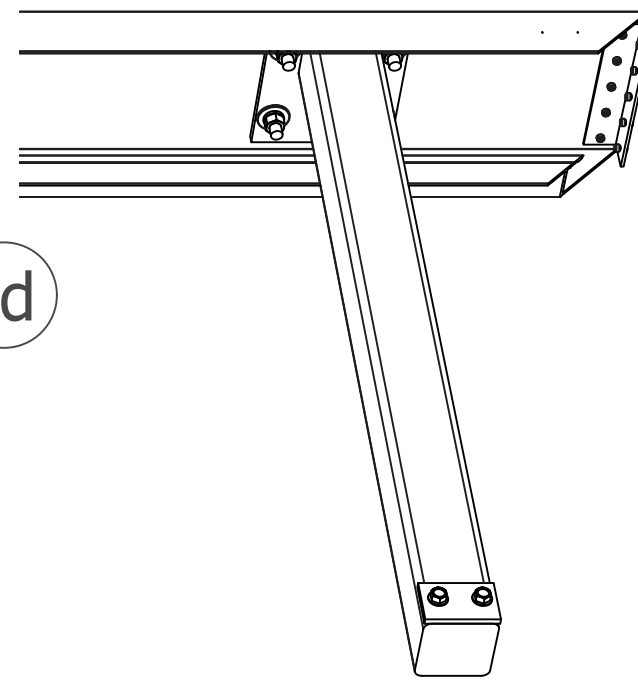
Canopy Assembly Instructions: Flat Soffit on Steel Tube Cantilever



- 3. Cantilever Tube Hanger Beam:**
- a.** As per steps on previous page, use hanger tube wall plate as template for wall bolt drilling in rear fascia.
 - b.** Drill 11/16" holes in rear fascia, to correspond to wall anchor layout.
 - c.** Hang fascia on wall bolts.
 - d.** Fasten hanger tube mounting plate to wall bolts, sandwiching fascia between wall and mounting plate.

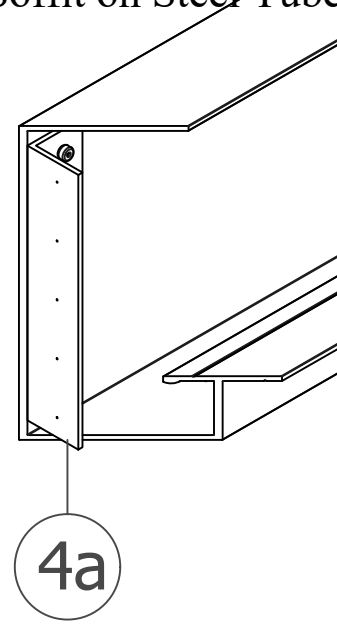
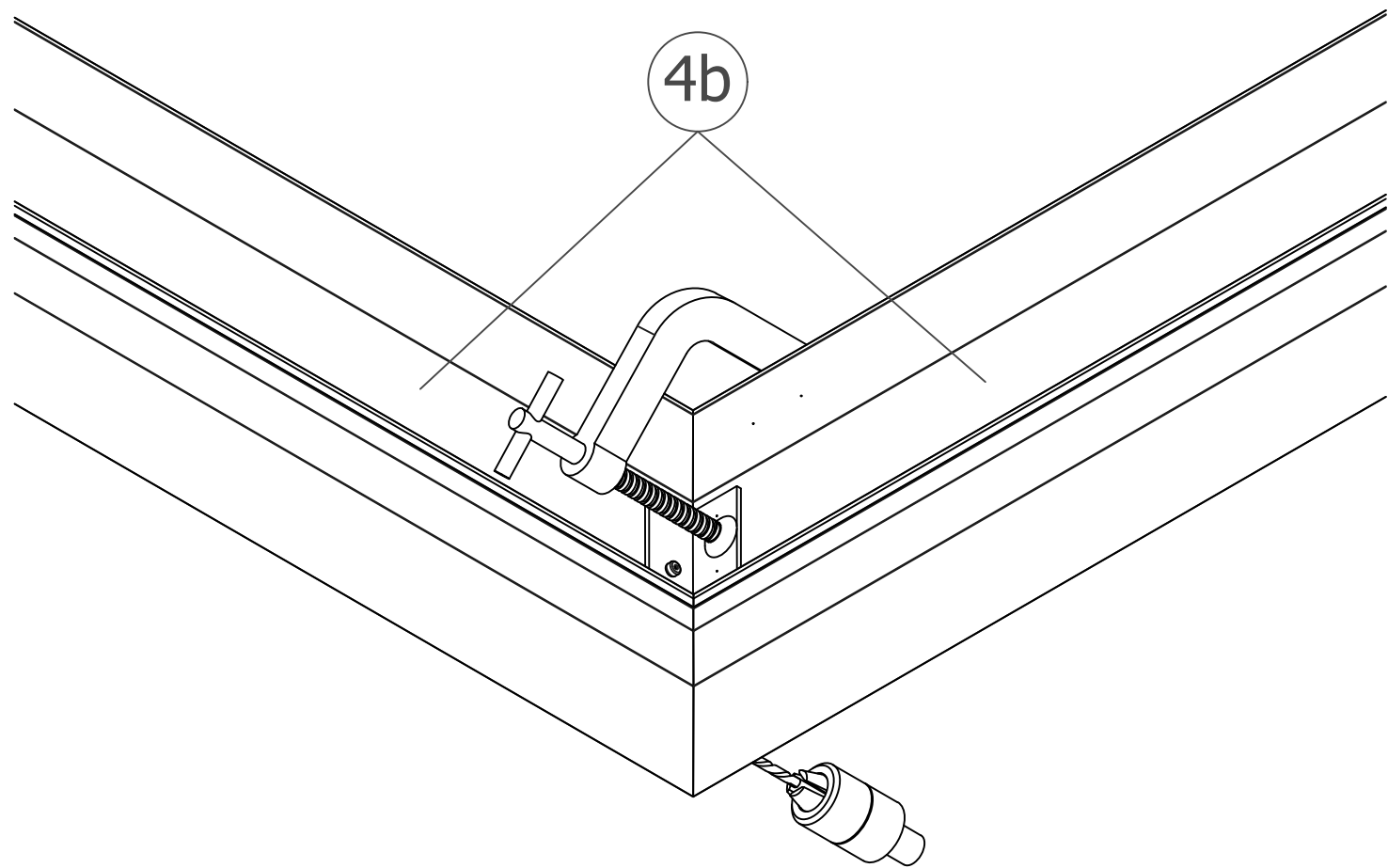


3d



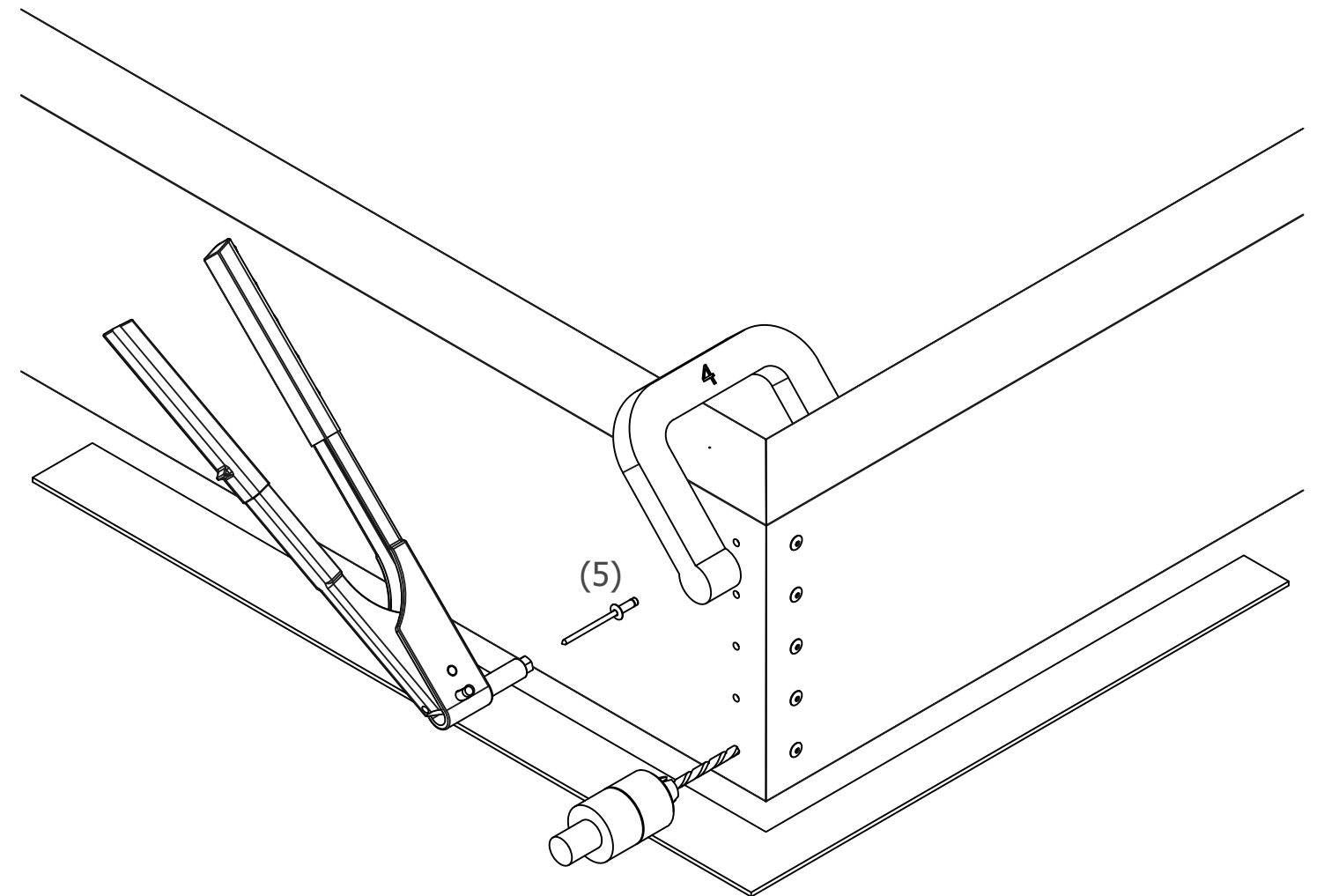
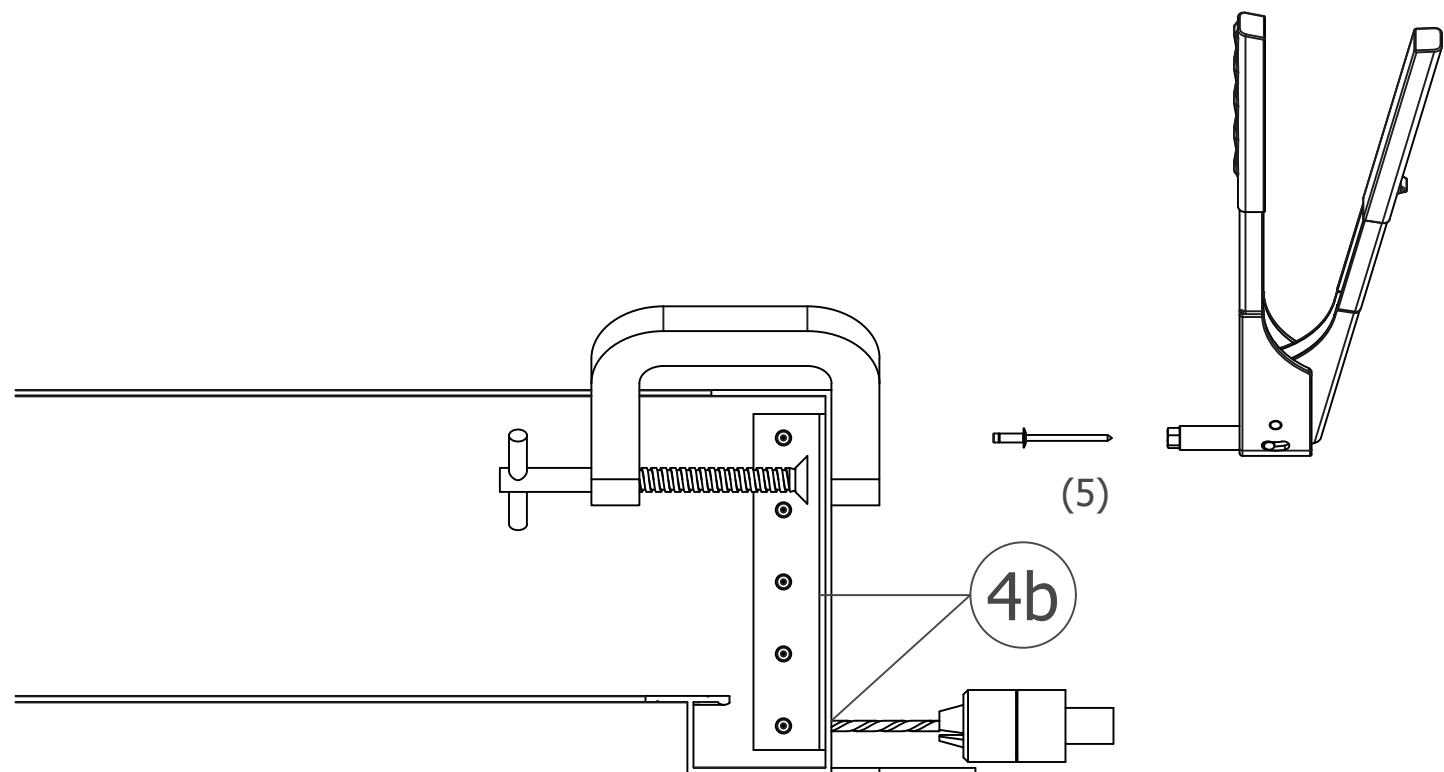
NOTE: USE THESE GENERAL INSTRUCTIONS IN CONJUNCTION WITH THE CANOPY SHOP DRAWINGS FOR YOUR SPECIFIC APPLICATION.

Canopy Assembly Instructions: Flat Soffit on Steel Tube Cantilever



4. Assemble Fascia

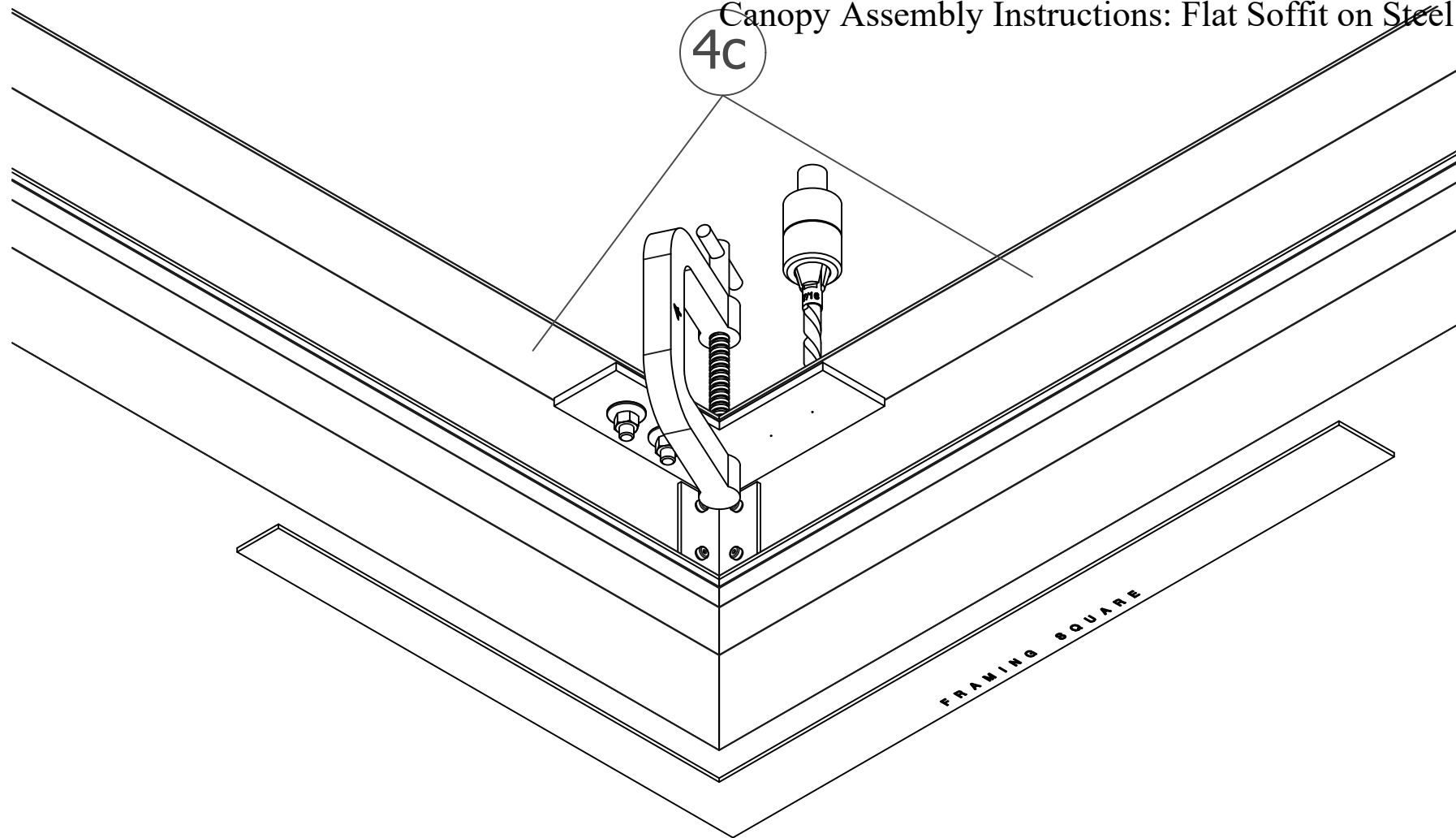
- a) 1 1/2" x 1 1/2" inside corner braces are already assembled to fascia on 1 side.
- b) Clamp together side and wall fascia pieces to make corner. Drill through factory holes in side fascia into 1 1/2" x 1 1/2" angle and use (5) 3/16" rivets.



NOTE: USE THESE GENERAL INSTRUCTIONS IN CONJUNCTION WITH THE CANOPY SHOP DRAWINGS FOR YOUR SPECIFIC APPLICATION.

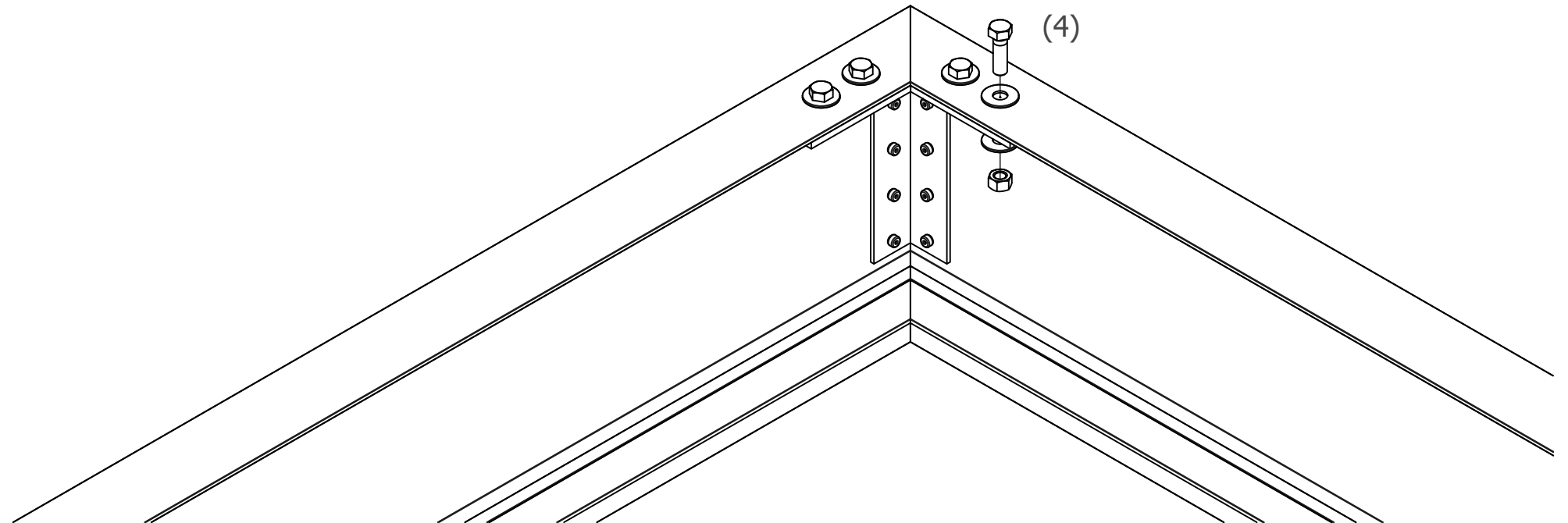
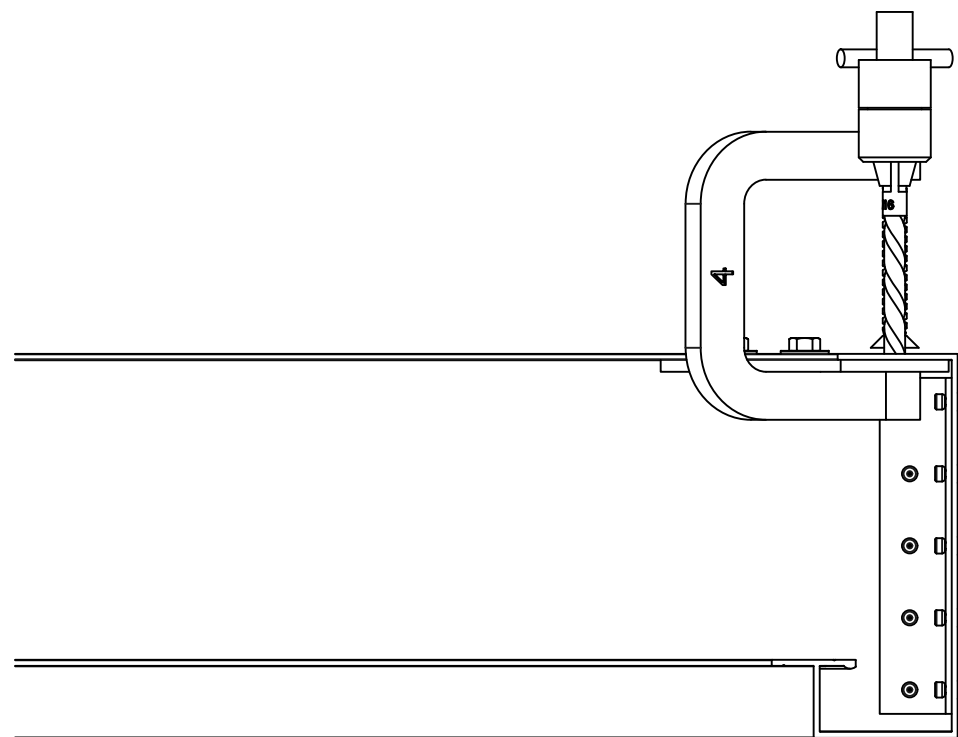
Canopy Assembly Instructions: Flat Soffit on Steel Tube Cantilever

4C

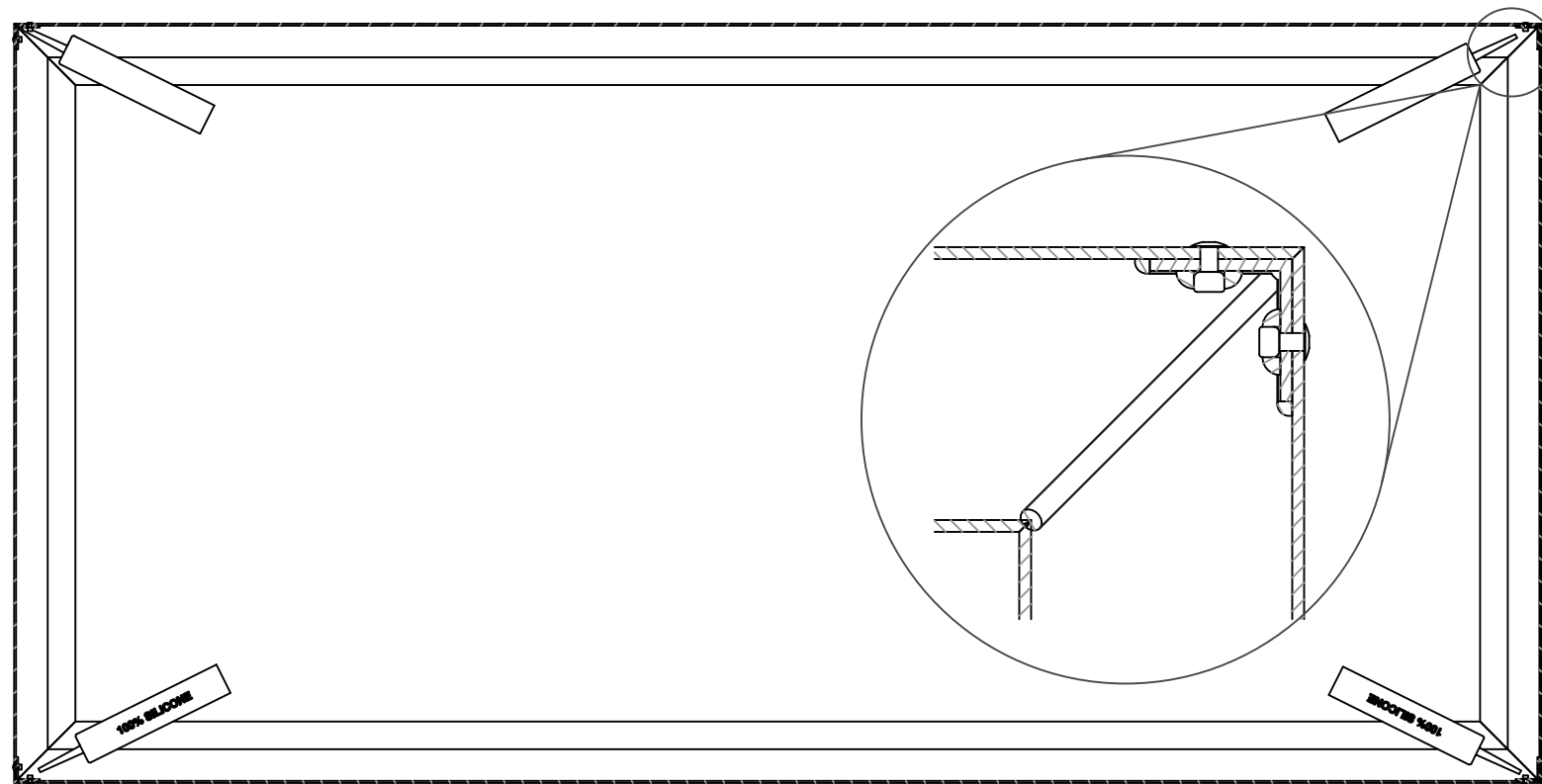


4. Assemble Fascia (CONTINUED)

c. Clamp and drill 7/16" holes through fascia top lip and 6" x 6" corner plates and fasten corner plate underneath top lip of fascia using (4) 3/8" machine bolt assemblies to complete corner.



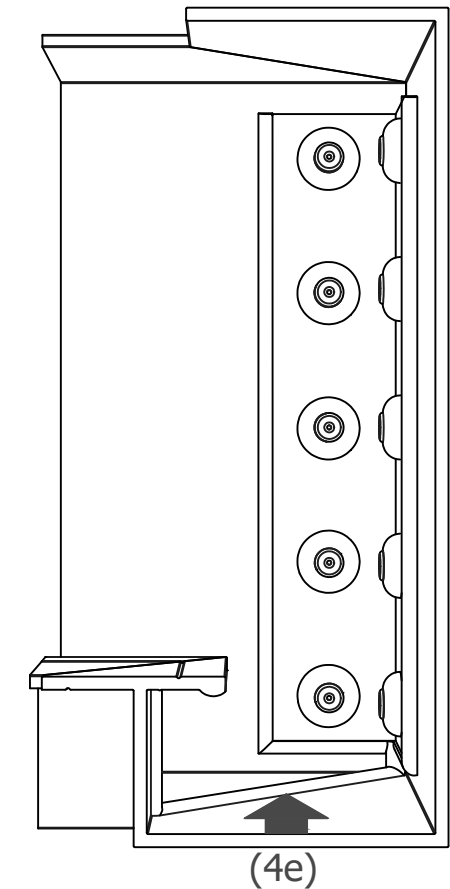
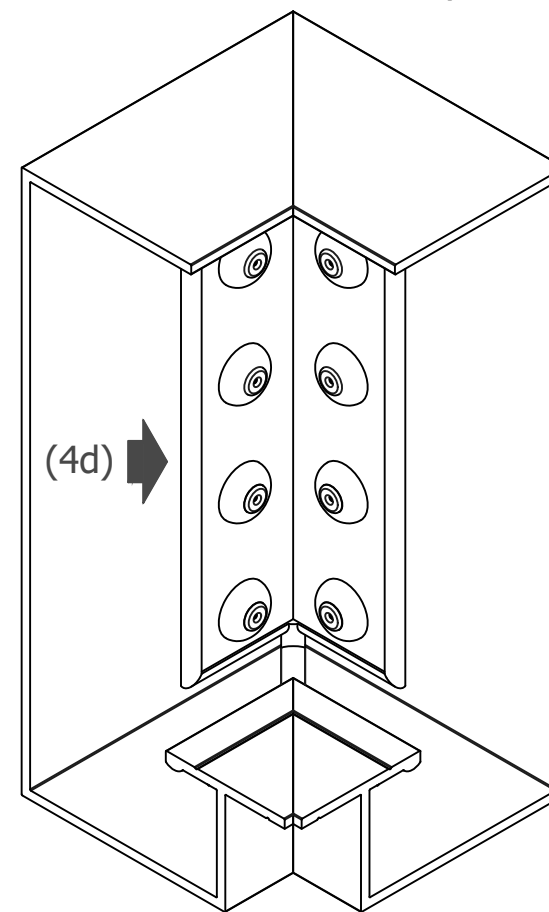
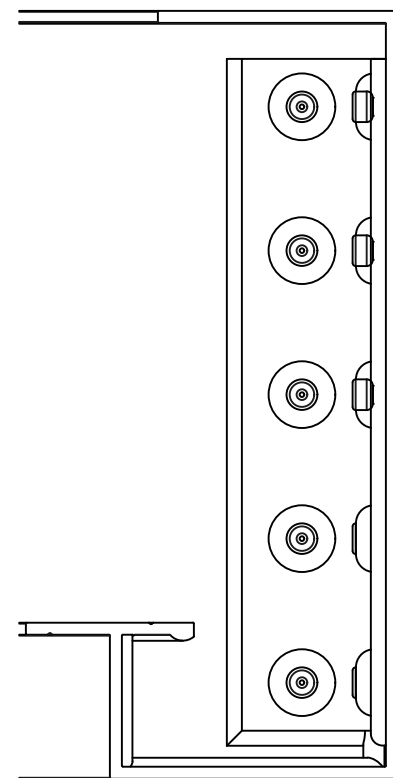
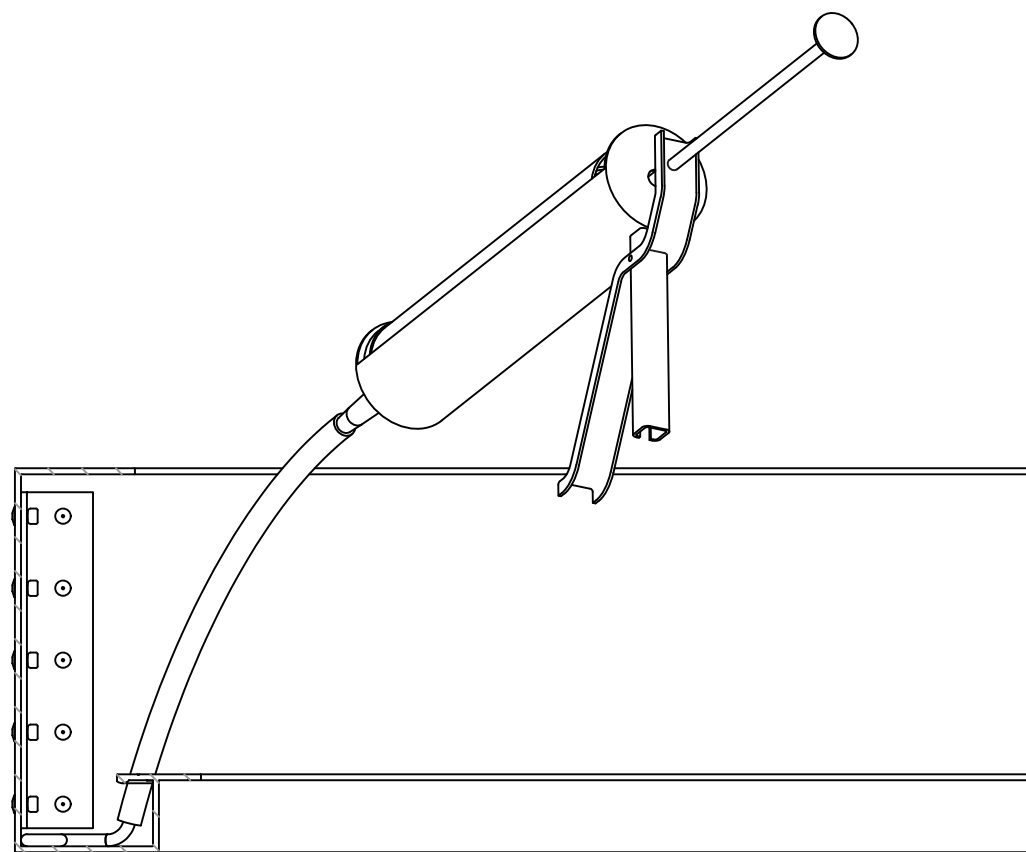
NOTE: USE THESE GENERAL INSTRUCTIONS IN CONJUNCTION WITH THE CANOPY SHOP DRAWINGS FOR YOUR SPECIFIC APPLICATION.



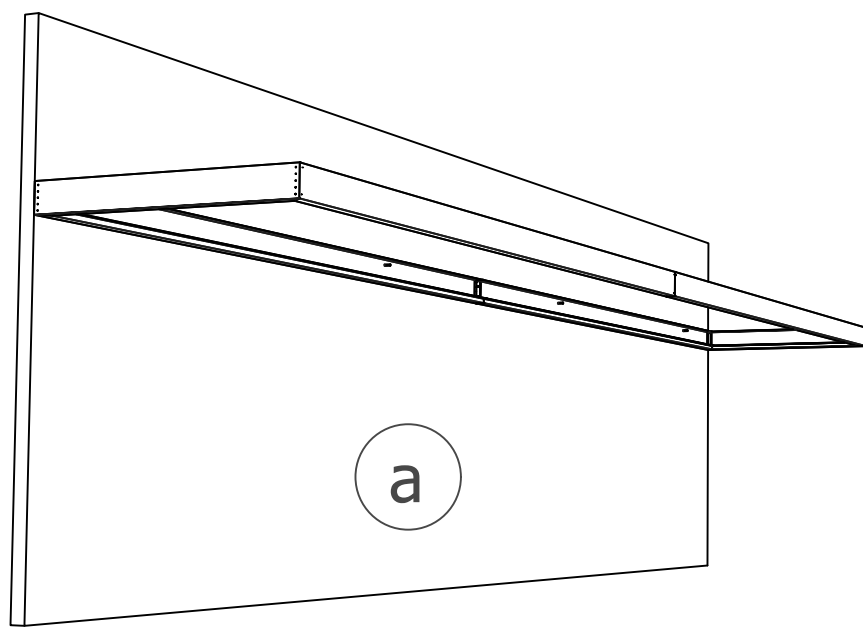
4. Assemble Fascia (CONTINUED)

d) Apply continuous sealant to either side of the corner angle, across bottom of trough at seam and back up to fascia inside lip. Use flexible hosing to direct silicone into tight corners. Seal all rivets.

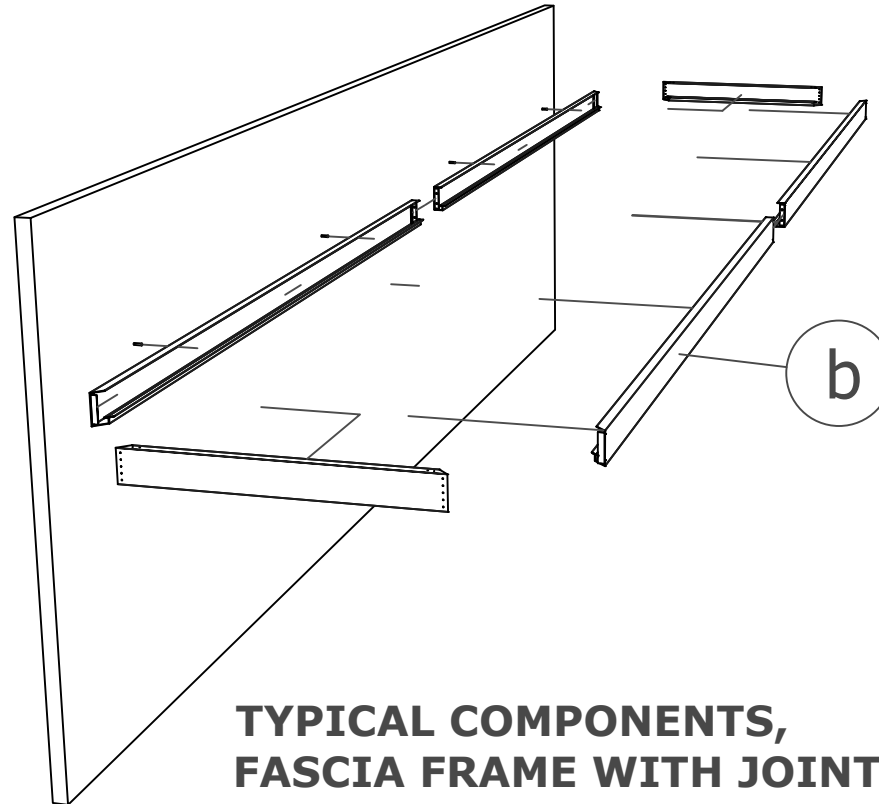
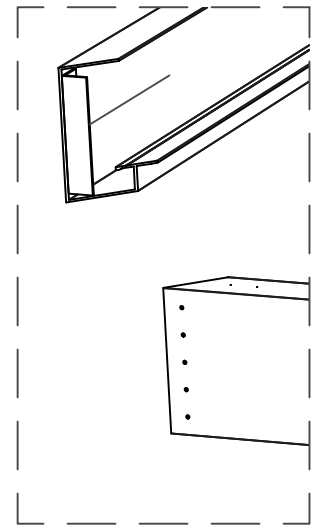
Seal all edges of angles and all around rivets. *NOTE: toughest spot is on the smaller vertical lip of the fascia.*



NOTE: USE THESE GENERAL INSTRUCTIONS IN CONJUNCTION WITH THE CANOPY SHOP DRAWINGS FOR YOUR SPECIFIC APPLICATION.



a



b

**TYPICAL COMPONENTS,
FASCIA FRAME WITH JOINTS**

4.1 OPTION: Fascia Splice:

a. On long canopies, fascia runs may be fabricated in shorter sections, due to length or handling restrictions, and are assembled on site.

b. Fascia pieces are preassembled with 1 1/2" x 1 1/2" angles at splice location.

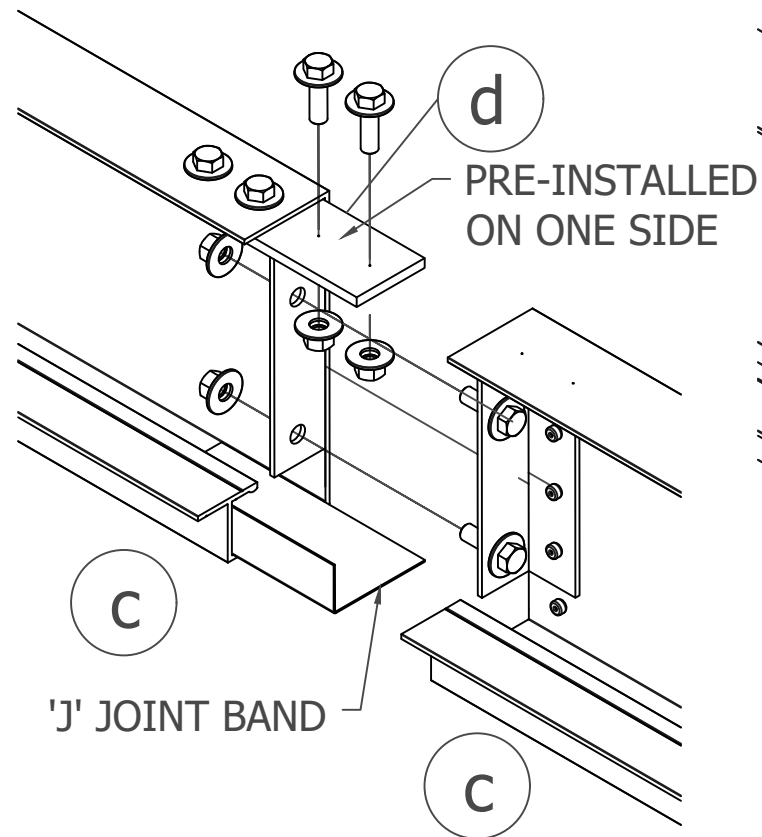
When fascia "breaks" between hanger beams (preferred):

c. Mate fascia pieces using 3/8" machine bolt assemblies to draw joint angles together for a tight splice.

d. Clamp and drill 7/16" holes through fascia top lip and 2" x 6" top splice plate and fasten top splice plate underneath top lip of fascia using (4) 3/8" machine bolt assemblies to join fascia pieces.

e. Seal all edges of joint bands and angles, and all around rivets.

NOTE: toughest spot is on the smaller vertical lip of the fascia along the joint and the band.

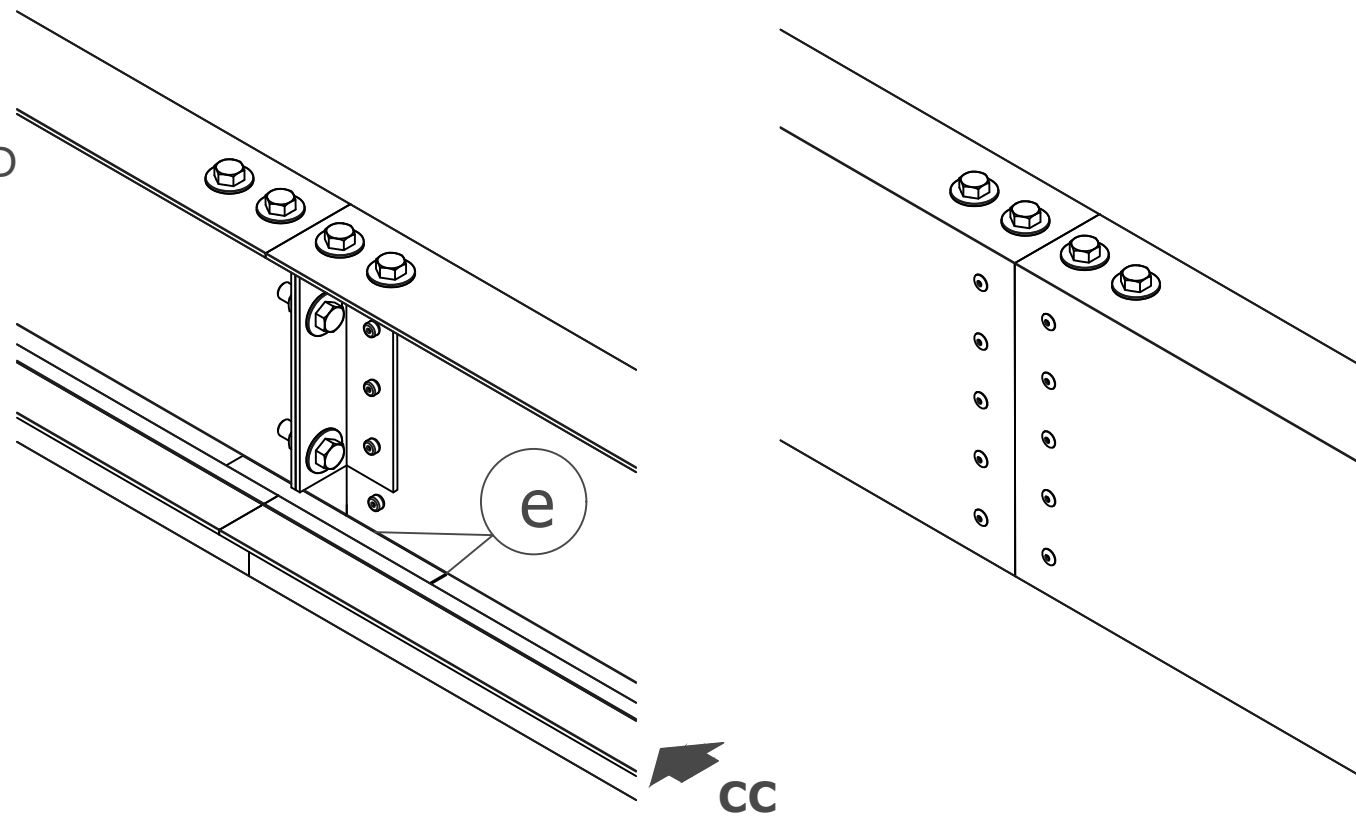


d
PRE-INSTALLED
ON ONE SIDE

c

'J' JOINT BAND

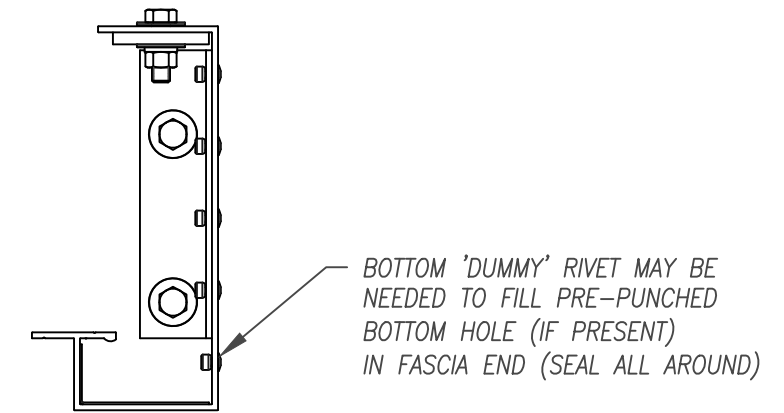
c



e

CC

FASCIA SPLICE ASSEMBLY

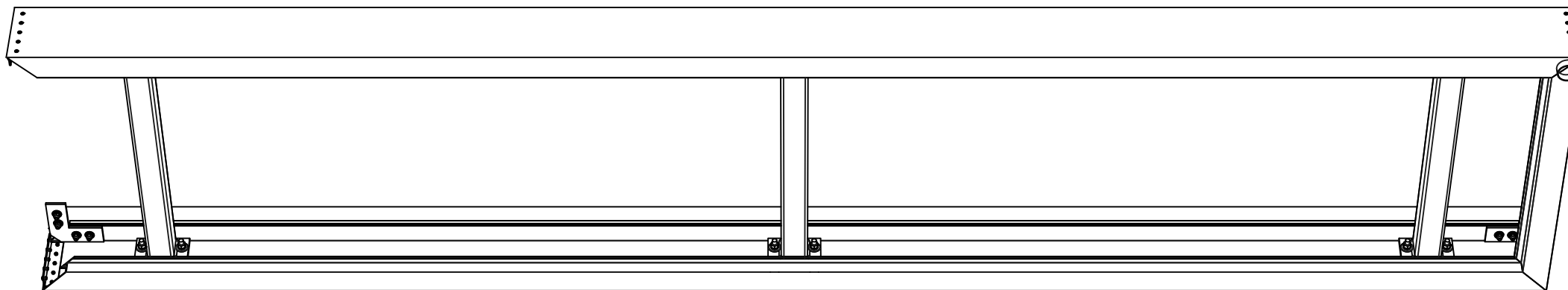
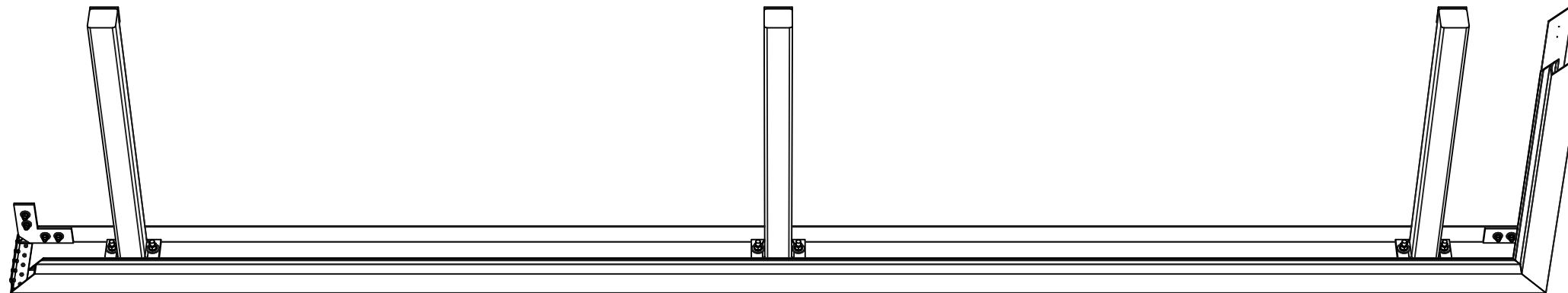
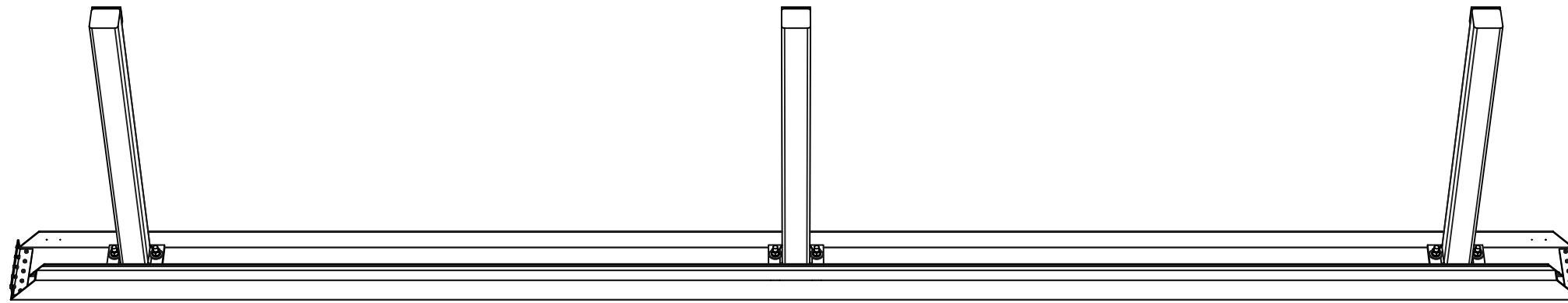


BOTTOM 'DUMMY' RIVET MAY BE NEEDED TO FILL PRE-PUNCHED BOTTOM HOLE (IF PRESENT) IN FASCIA END (SEAL ALL AROUND)

SECTION 'CC'

NOTE: USE THESE GENERAL INSTRUCTIONS IN CONJUNCTION WITH THE CANOPY SHOP DRAWINGS FOR YOUR SPECIFIC APPLICATION.

Canopy Assembly Instructions: Flat Soffit on Steel Tube Cantilever

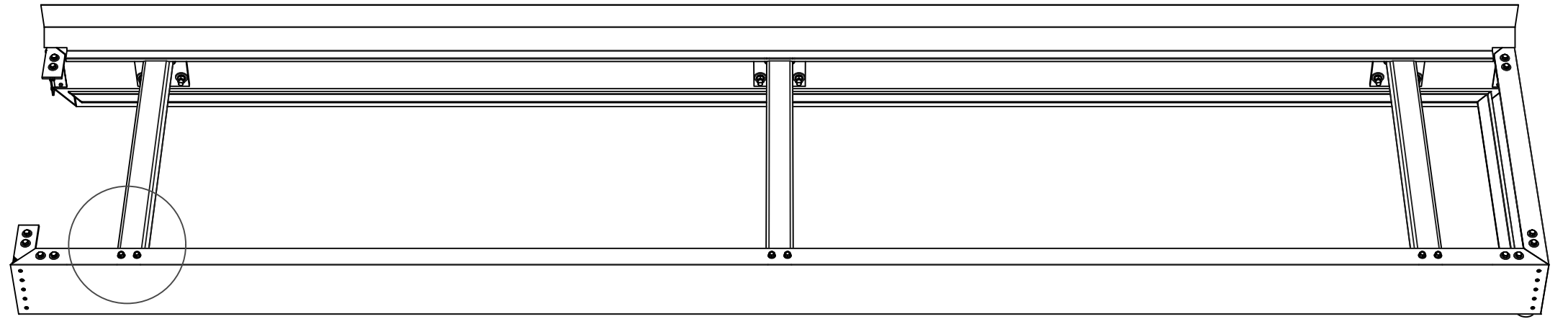
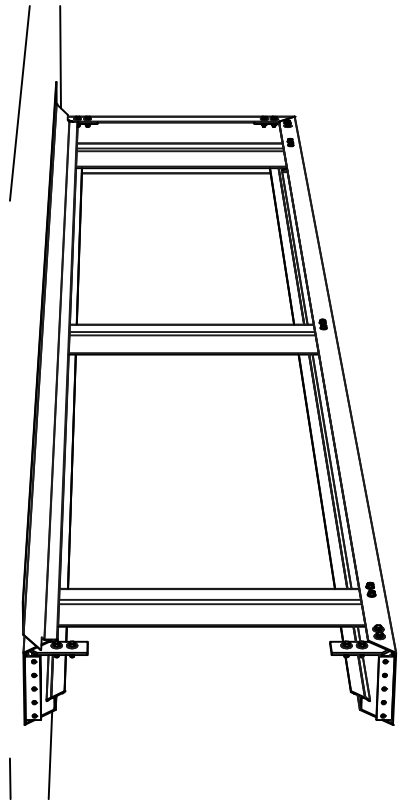


- 4. Assemble Fascia** (review)
- a) $1\frac{1}{2}$ " x $1\frac{1}{2}$ " inside corner braces are already assembled to fascia on 1 side.
 - b) Clamp together side and wall fascia pieces to make corner. Drill through factory holes in side fascia into $1\frac{1}{2}$ " x $1\frac{1}{2}$ " angle and use (5) $\frac{3}{16}$ " rivets.
 - c) Clamp and drill $\frac{7}{16}$ " holes through fascia top lip and 6" x 6" corner plates and fasten corner plate underneath top lip of fascia using (4) $\frac{3}{8}$ " machine bolt assemblies to complete corner.
 - d) Apply continuous sealant to either side of the corner angle, across bottom of trough at seam and back up to fascia inside lip. Use flexible hosing to direct silicone into tight corners. Seal all rivets.

Seal all edges of angles and all around rivets. *NOTE: toughest spot is on the smaller vertical lip of the fascia.*

NOTE: USE THESE GENERAL INSTRUCTIONS IN CONJUNCTION WITH THE CANOPY SHOP DRAWINGS FOR YOUR SPECIFIC APPLICATION.

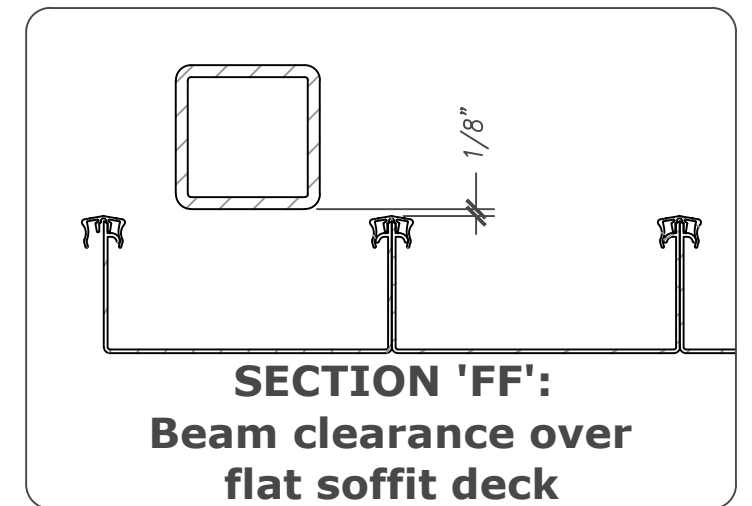
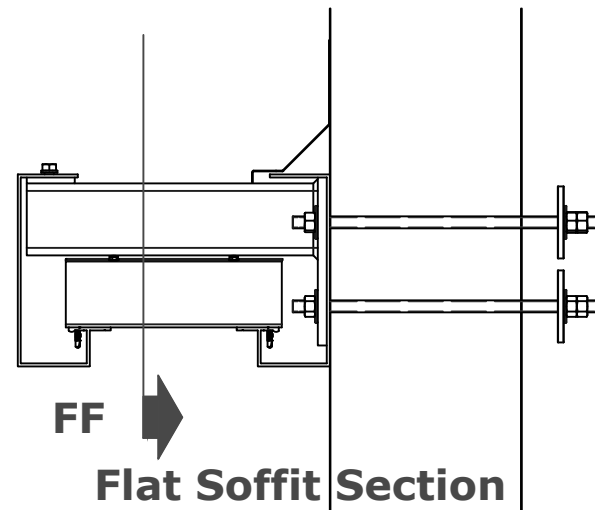
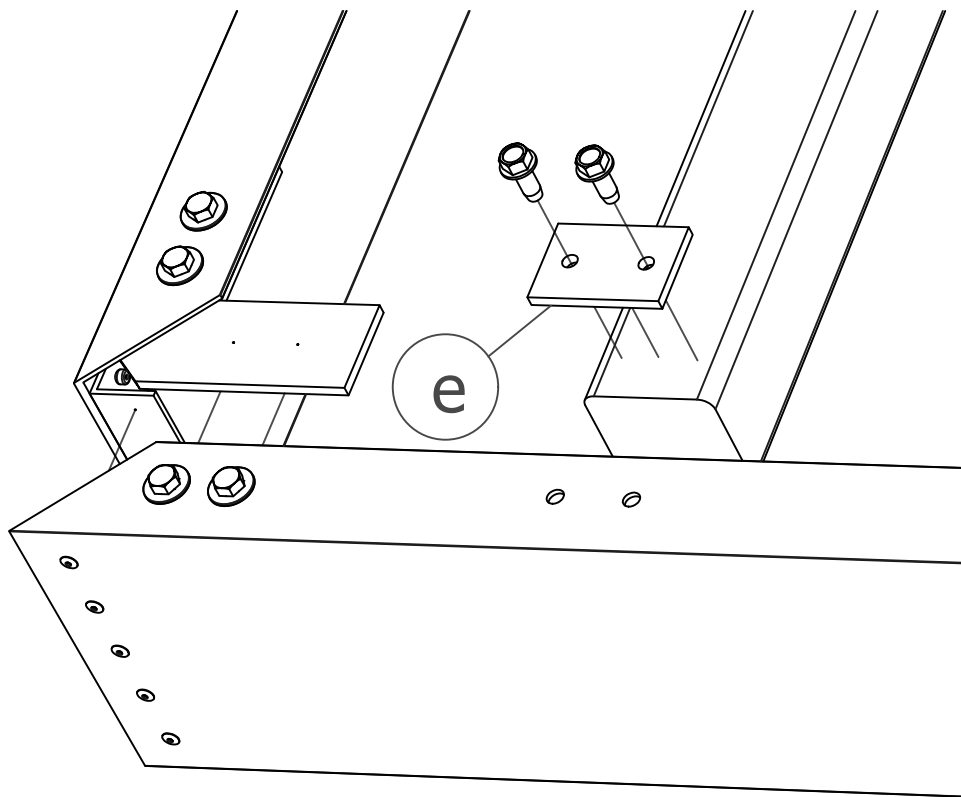
Canopy Assembly Instructions: Flat Soffit on Steel Tube Cantilever



4. Fascia Assembly (continued) CANTILEVER TUBE FRONT FASCIA ATTACHMENT:

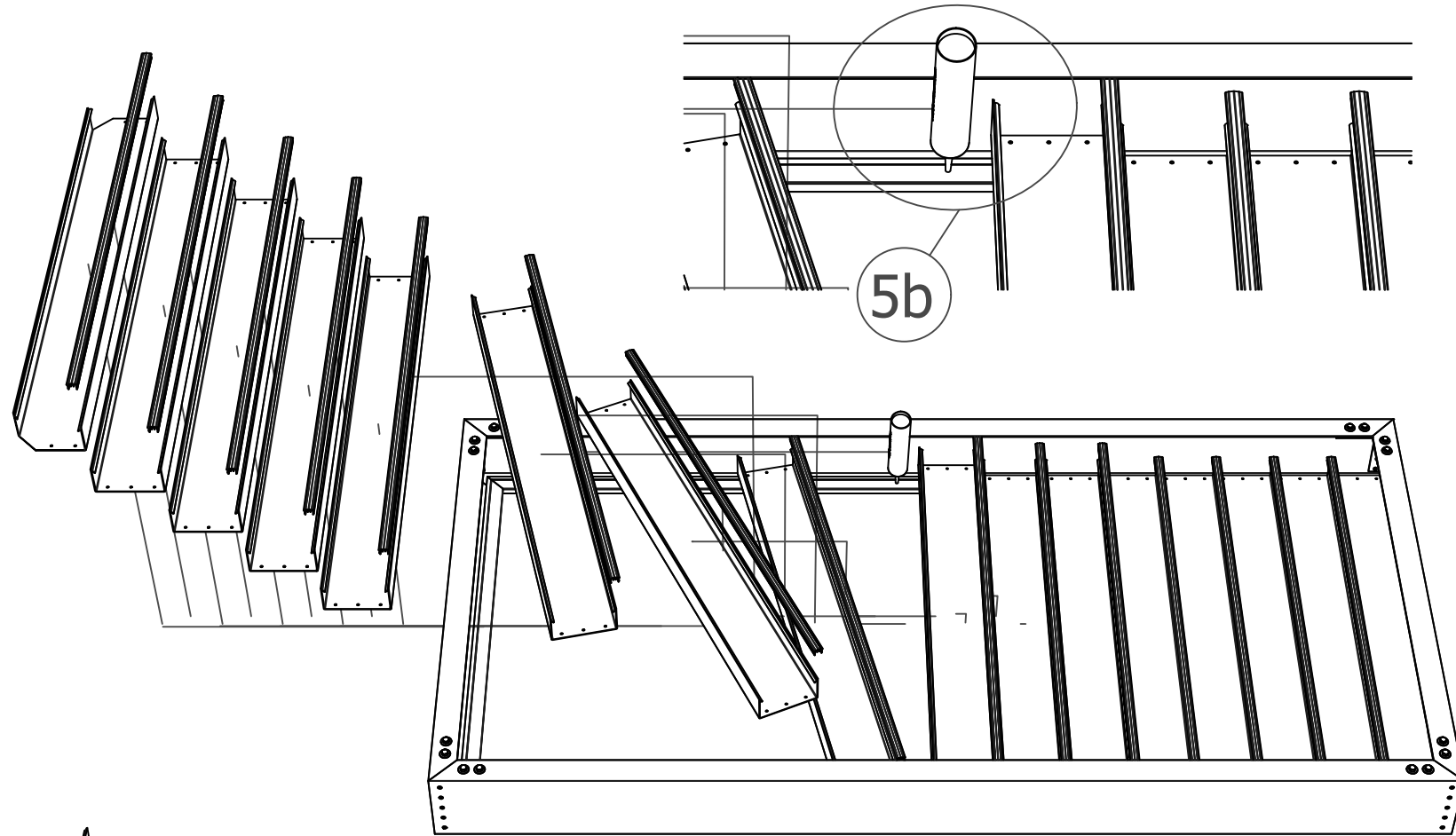
e) Install front fascia in the following manner:
Using shim as template, drill $\frac{11}{32}$ " holes for 3/8-16 **thread-rolling screws** in top of hanger tube at front; Make holes in fascia lip to align; then drive screws down through fascia lip, shim, and into hanger tube.

NOTE: For flat soffit type deck, Mapes hanger beam layout attempts to center beam between vertical ribs of deck assembly. When deck rib/snap cap occur under beam, there is minimal clearance.



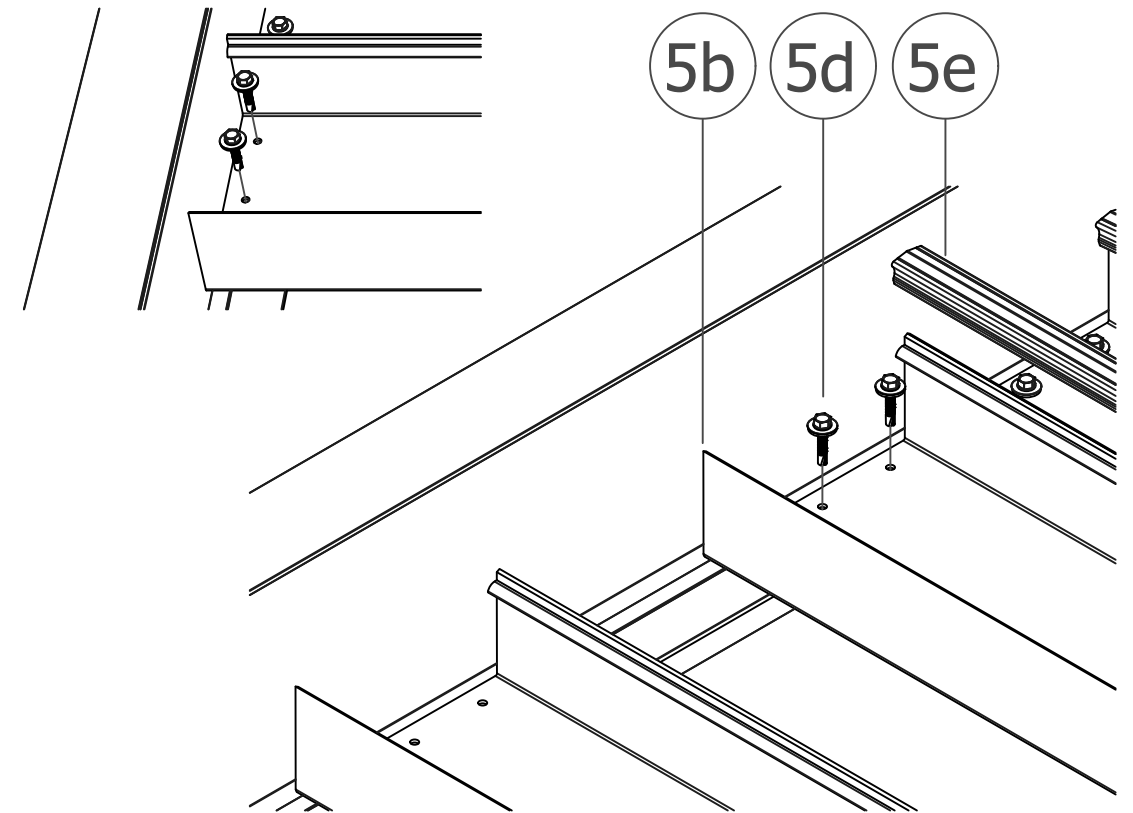
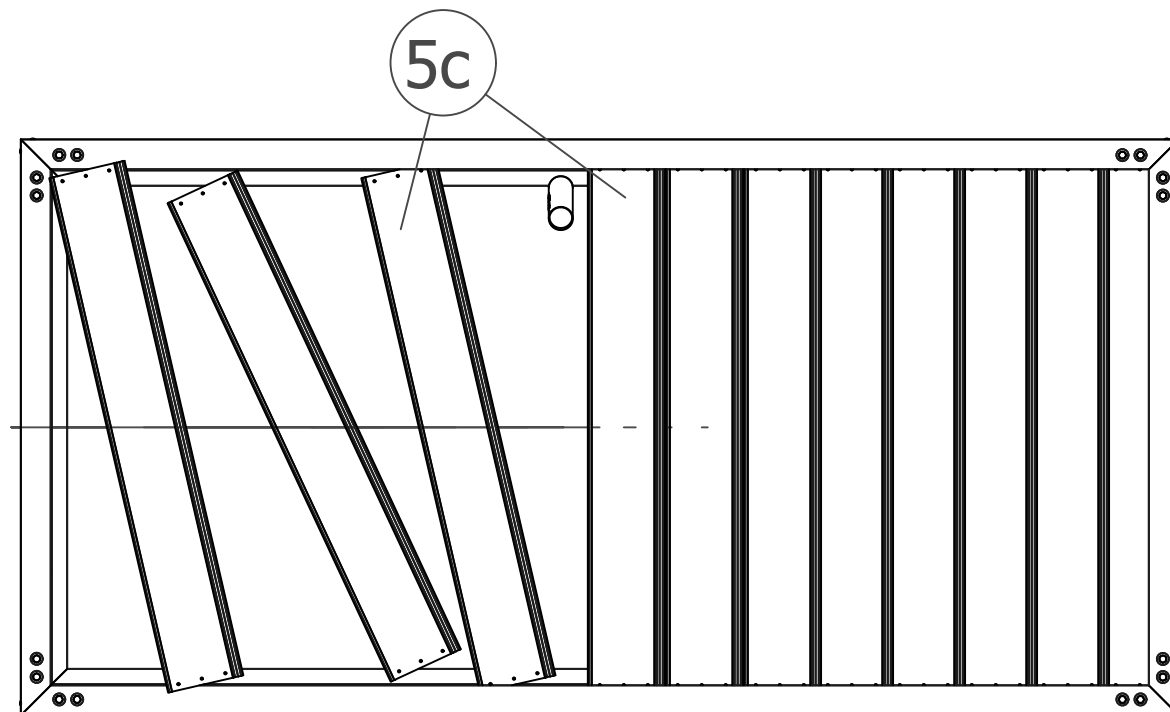
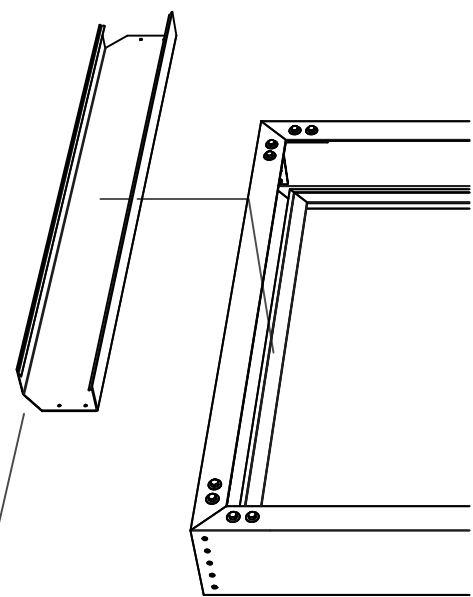
NOTE: USE THESE GENERAL INSTRUCTIONS IN CONJUNCTION WITH THE CANOPY SHOP DRAWINGS FOR YOUR SPECIFIC APPLICATION.

Canopy Assembly Instructions: Flat Soffit on Steel Tube Cantilever



5. Install Decking

- Assemble (per #4b & c) last side fascia piece to complete fascia frame. Seal corners per #4d.
- Run continuous sealant along lower fascia lip to be between it and underside of deck when installed. Load deck from top. Rotate each deck piece to slip under top lip of fascia and position on lower fascia lip such that deck extends over inside lip.
- Maneuver decking to match spacing on blueprints. Make sure both ends (of deck) are equal distance from inside of front and rear fascia.
- With (3) #12 tek screws, fasten decking to fascia using pre-punched holes on lower decking.



*NOTE:
TO APPLY SEALANT, OR TO
CLEAR DEBRIS FROM TROUGH,
DECK CORNER MAY BE
FIELD-NOTCHED BY INSTALLER

NOTE: USE THESE GENERAL INSTRUCTIONS IN CONJUNCTION WITH THE CANOPY SHOP DRAWINGS FOR YOUR SPECIFIC APPLICATION.

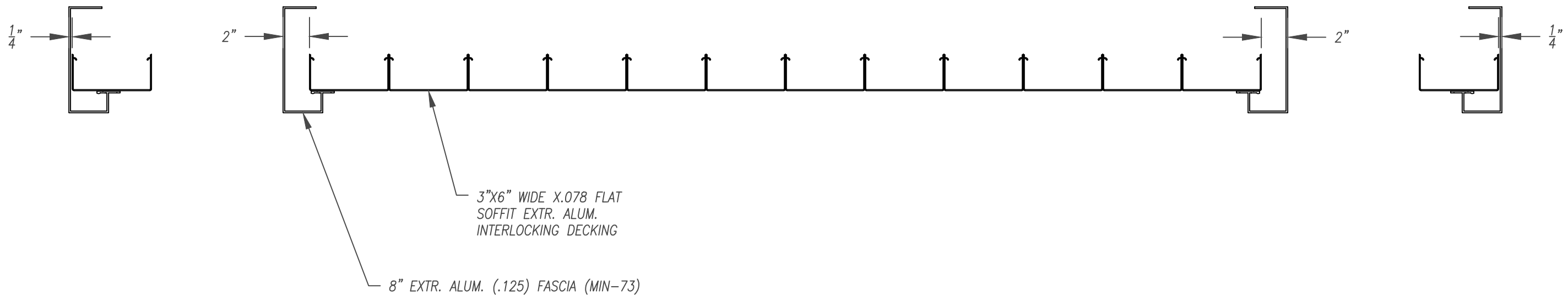
5. Install Decking (continued)

c. Maneuver decking to match spacing on blueprints. Make sure both ends (of deck) are equal distance from inside of front and rear fascia.

Deck offset from end fascia may vary based on canopy width. Flat soffit deck pieces are 6" or 3" wide (or end pieces may be "slit" - that is - trimmed on one side to fit within fascia frame).

Maximum deck side offset from outer face of side fascia is 2 inches; minimum offset is $\frac{1}{4}$ ". Begin and end installation such that deck offset will be equal on both sides.

Unless other wise noted, deck **ends** are offset 2 inches from outer face of front and rear fascia.



NOTE: USE THESE GENERAL INSTRUCTIONS IN CONJUNCTION WITH THE CANOPY SHOP DRAWINGS FOR YOUR SPECIFIC APPLICATION.

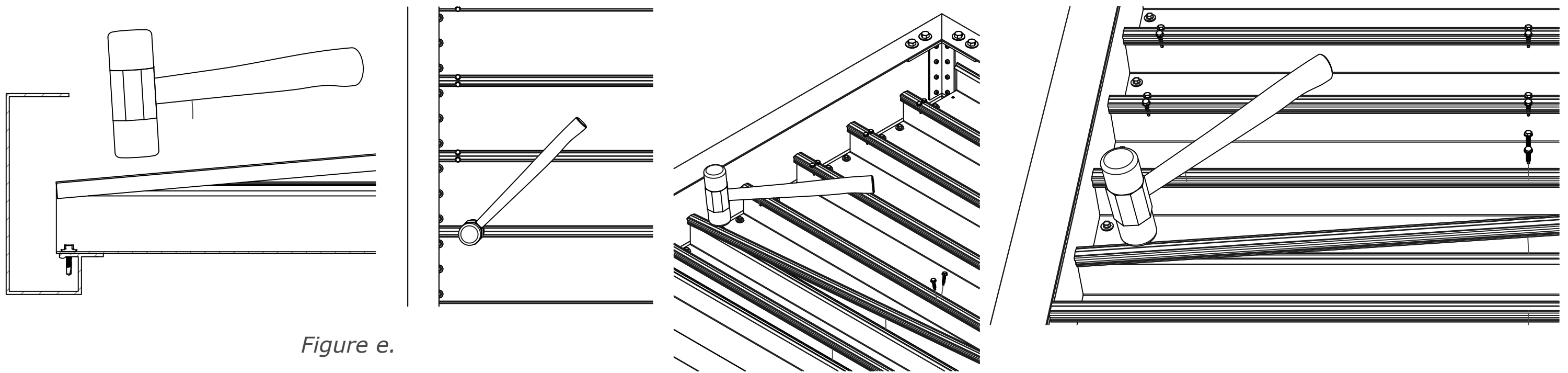


Figure e.

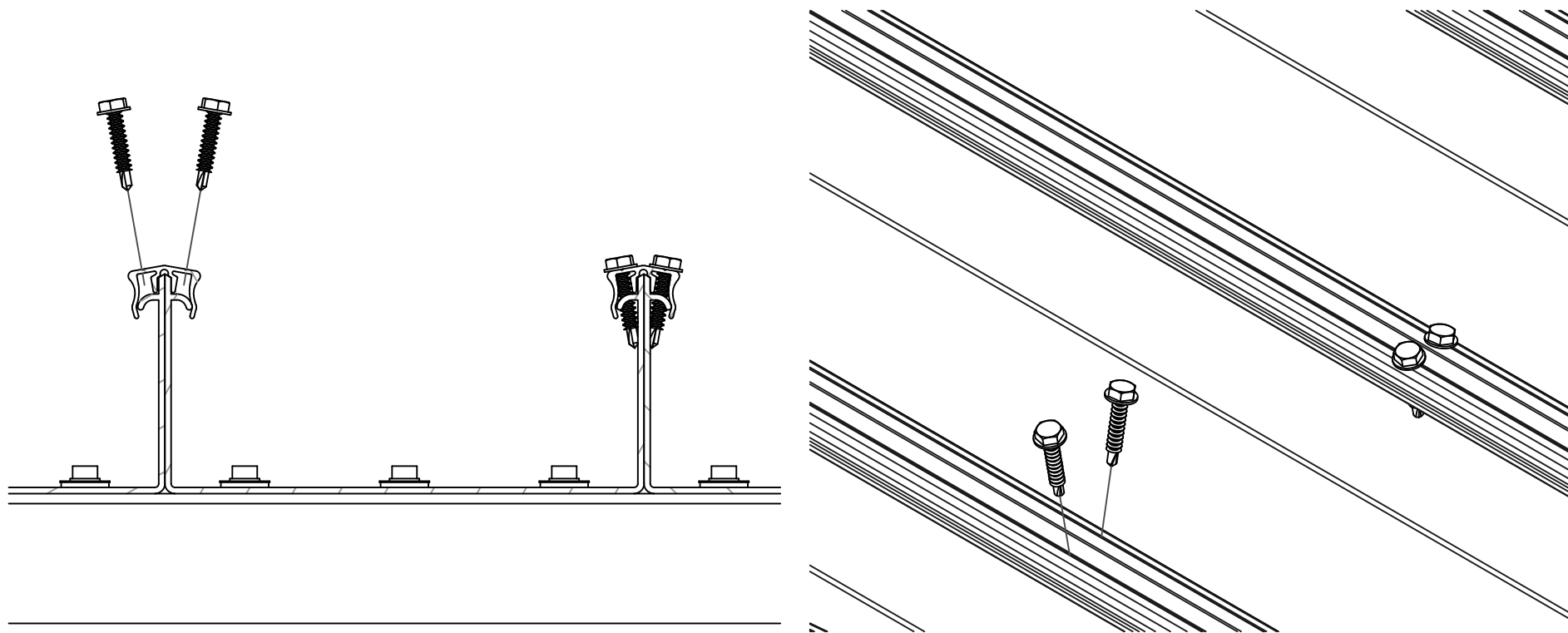
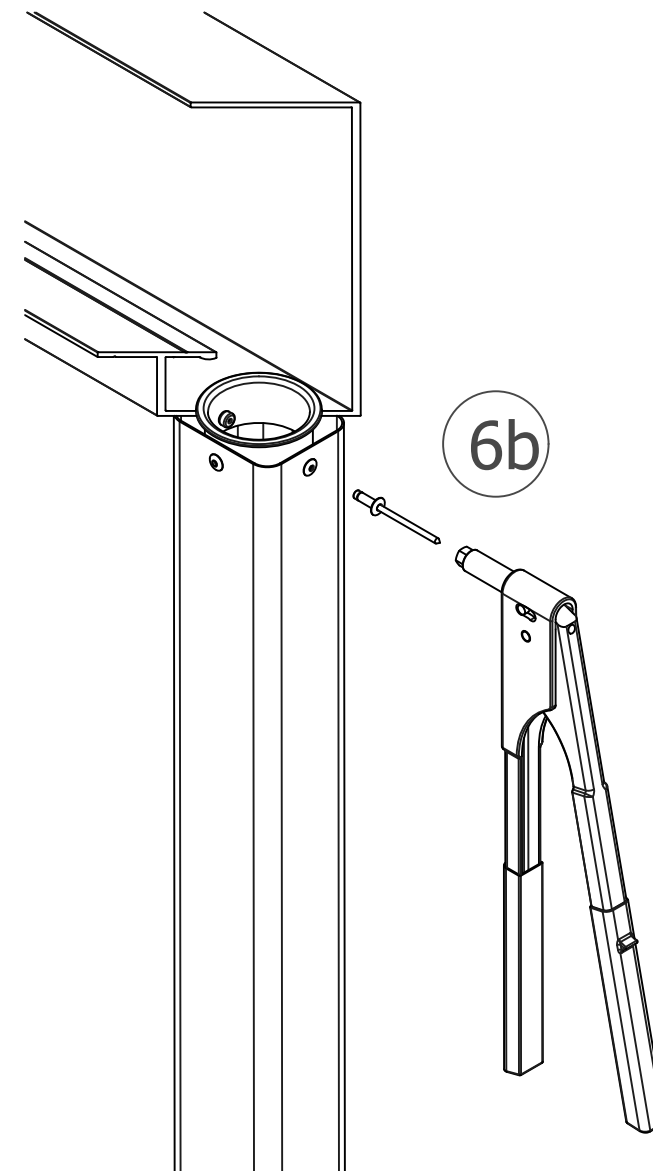
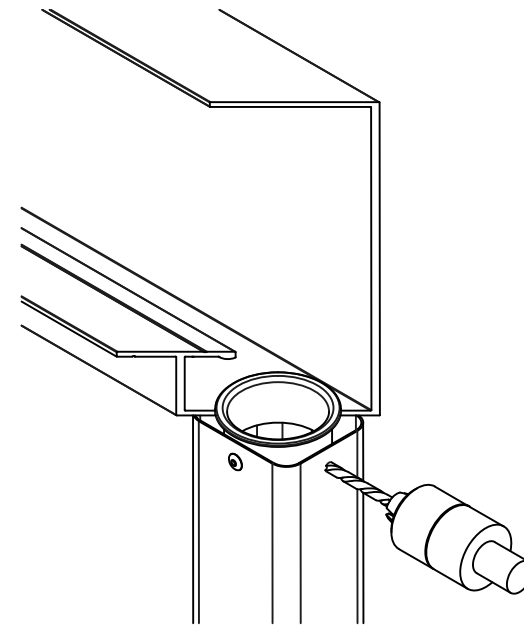
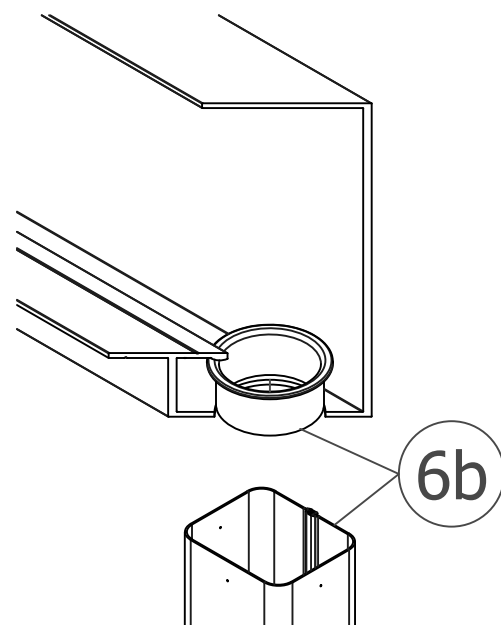
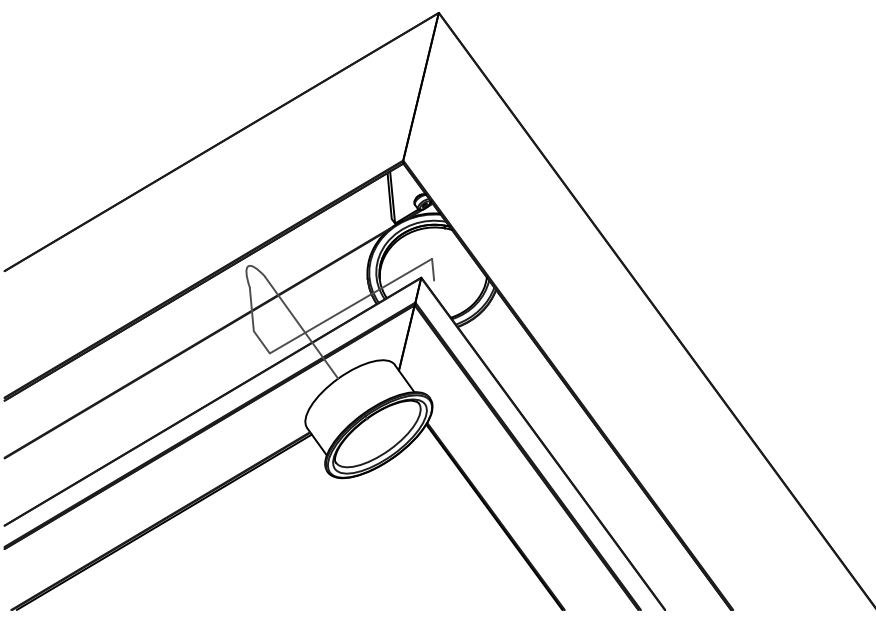
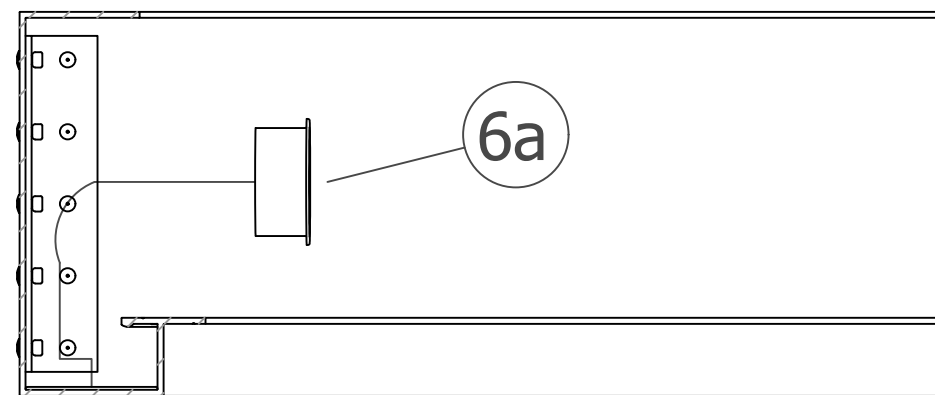
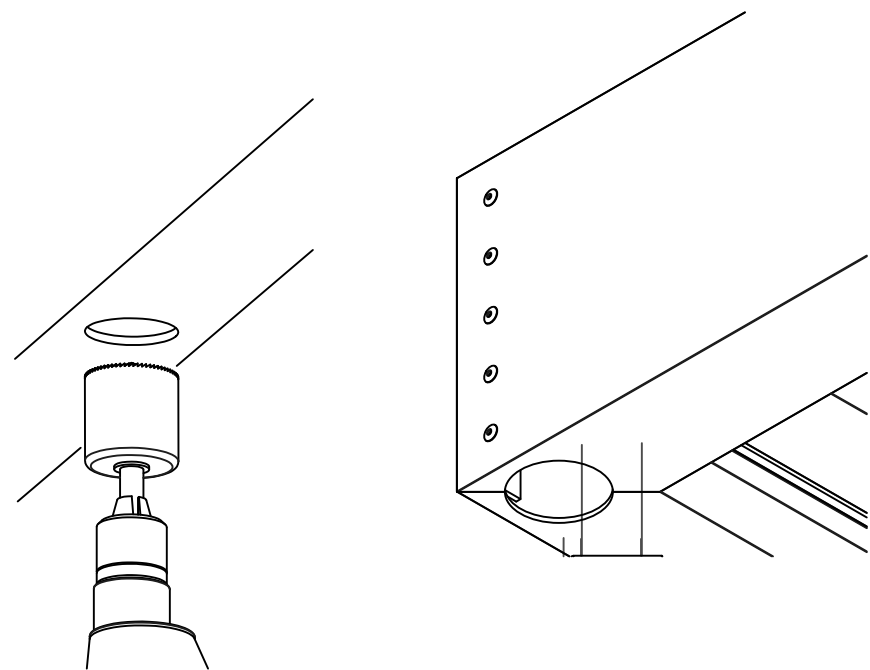


Figure f.

5. Install Decking (continued)

- e) Using a rubber mallet, put on snap cap. (Hammer one end on, then work your way down, hammering every foot until you get the whole piece to snap on).
- f) Apply #10-16 tek screws to snap cap at 24" on center on both sides of the peak. Pay attention when screwing, so screw grabs both snap cap and deck flare, or snap cap might be pushed up. If it does, back out screw (snap cap will go back down) then put screw right back in.

NOTE: USE THESE GENERAL INSTRUCTIONS IN CONJUNCTION WITH THE CANOPY SHOP DRAWINGS FOR YOUR SPECIFIC APPLICATION.



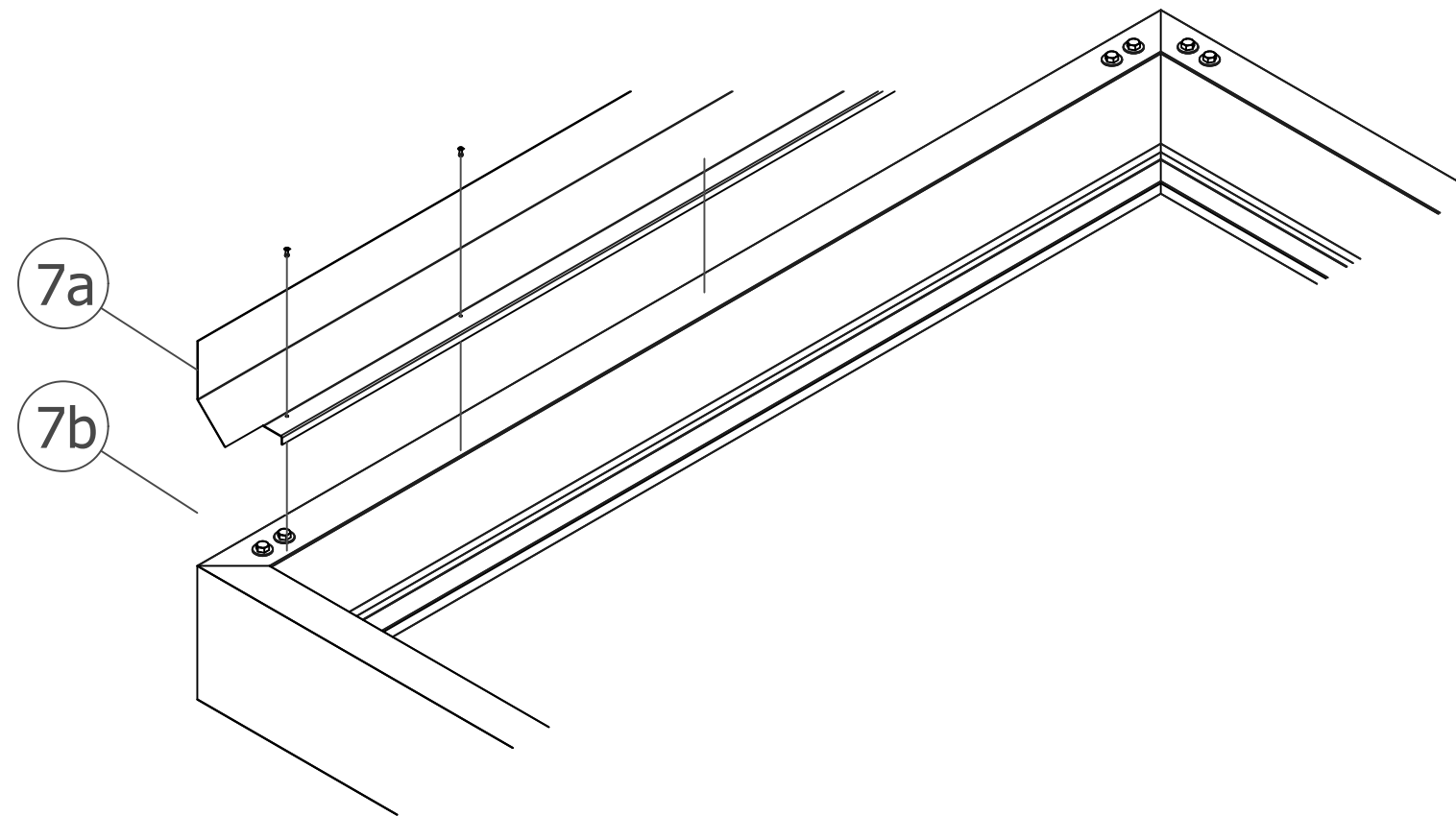
6. Drill Proper Drainage Holes in Fascia, Fascia Extension Assembly (If Applicable)

DRAIN STUB: a) Drill $2 \frac{5}{16}$ " hole in fascia trough at desired drain location and install $2 \frac{1}{4}$ " pressed aluminum drain stub.

* **Mapes recommends at least one (1) drain location for each 175 SF of canopy and each 15' of fascia (gutter) distance.**

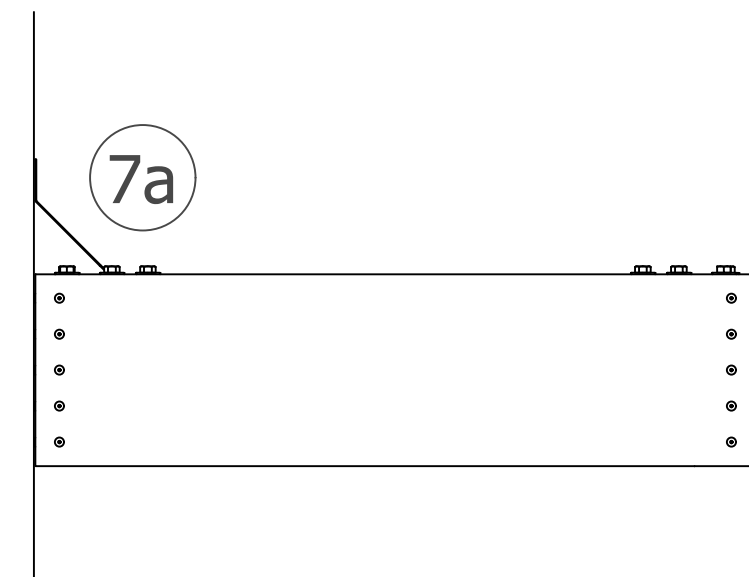
DOWNSPOUT: b) If using downspout, drill $2 \frac{5}{16}$ " hole in fascia trough for drain stub (*as above*), and attach downspout with downspout elbows and tie-backs using $\frac{3}{16}$ " self-sealing rivets. Modifications of drain stub may apply in some instances.

NOTE: USE THESE GENERAL INSTRUCTIONS IN CONJUNCTION WITH THE CANOPY SHOP DRAWINGS FOR YOUR SPECIFIC APPLICATION.



7. Flash and Seal

- a) Flashing provided by Mapes. (*Flashing is sent long; notch for length and fascia lip in field*).
- b) After canopy is up, start from one end. Make flashing flush with the back of fascia at wall, notch/cut off the lower leg of flashing so it fits/funnels into the canopy. Put a rivet down the middle part of flashing into the top of rear fascia (one rivet every 12"). If you have multiple overlapping pieces of flashing, then silicone at every joint. Once you finish at the other end of canopy, put thick bead of silicone behind/against the flashing/wall and to also do one at the top edge of the flashing at wall. The point is to prevent seepage or wicking down wall behind canopy and flashing.



NOTE: USE THESE GENERAL INSTRUCTIONS IN CONJUNCTION WITH THE CANOPY SHOP DRAWINGS FOR YOUR SPECIFIC APPLICATION.